
***BEFORE USING THE APPLIANCE FOR THE FIRST TIME:***

- **IMPORTANT:** MAKE SURE YOU HAVE READ THE INSTALLATION INSTRUCTIONS.
- **IMPORTANT:** REMOVE THE TRANSPORT SCREWS AND THE TRANSPORT BRACKET.
- **First wash cycle without laundry:**

1. Open the tap(s).
2. Close the drum flaps.
3. Pour a small amount of detergent (about 30 ml) into the detergent dispenser compartment .
4. Close the lid.
5. Select a short wash programme and a low spin speed (see programme chart).
6. Switch on the appliance.

This will remove any water remaining in the machine from the manufacturer's test run.

NORMAL DAILY USE:

1. Open the tap(s).
2. Sort the laundry according to fabric type and colour and load the machine.
3. Close the drum flaps.
4. Add detergent and any additives required into the dispenser.
5. Close the lid.
6. Select the programme, temperature, spin speed and special options.
7. Switch on the appliance.

Read these user instructions carefully to learn about all the functions of your washing machine.

CONTENTS	GB
INSTALLATION INSTRUCTIONS	PAGE 4
WASHING MACHINE AND ACCESSORIES	PAGE 7
PROTECTING THE ENVIRONMENT	PAGE 8
SAFETY INSTRUCTIONS	PAGE 8
TRANSPORT / HANDLING	PAGE 8
PREPARING THE WASH	PAGE 9
DETERGENT AND ADDITIVES	PAGE 10
DYEING AND BLEACHING	PAGE 10
STARCHING	PAGE 10
REMOVING THE FOREIGN BODY TRAP	PAGE 11
DRAINING RESIDUAL WATER	PAGE 11
MAINTENANCE AND CLEANING	PAGE 12
TROUBLESHOOTING GUIDE	PAGE 14
AFTER-SALES SERVICE	PAGE 15

INSTALLATION INSTRUCTIONS

HOW TO UNPACK THE APPLIANCE

1. Cut and remove the shrink-wrap.
2. Remove the top protection and the protection corners.
3. Remove the bottom protection by tilting and turning the appliance on one rear bottom corner.
4. Open the lid while pressing it slightly down and at the same time operate the handle. Remove the polystyrene cushion.
5. Peel off the light blue protective film from the panel (depending on model).

HOW TO REMOVE THE TRANSPORT SCREWS AND THE TRANSPORT BRACKET

The appliance is fitted with the transport screws and the transport bracket to prevent internal damage while being moved.

Before using the appliance, the transport bracket at the back MUST be removed.

1. Unscrew the two screws **A** and the four screws **B** with a flat screwdriver or a N° 8 hex nut screwdriver.
2. Remove the transport bracket.
3. Replace the four outer screws **B** into the machine again and tighten.
4. Tear off the two stop plugs **C** from the hose holder and clip them into the openings of the machine **D**.

Note: In case of future moves, always transport the washing machine upright.

INSTALLATION

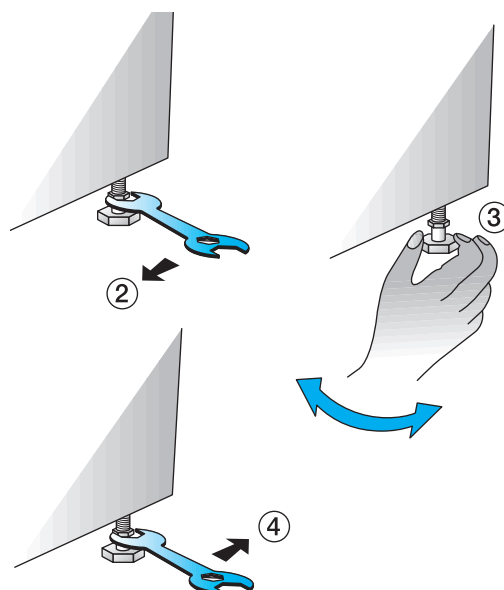
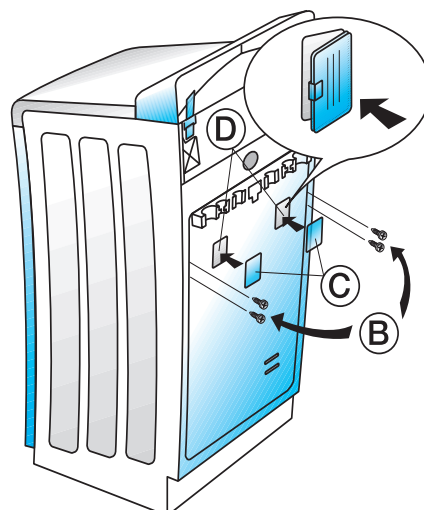
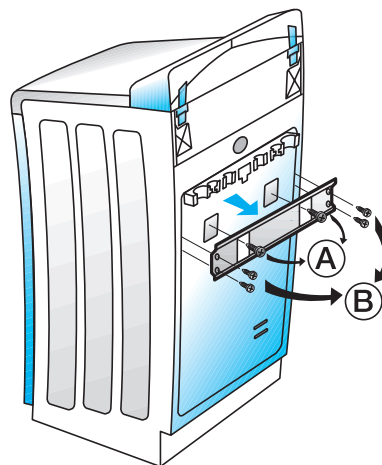
- Install the appliance on a solid and level floor surface close to electrical, water and drain connections.
- Make sure that all feet are stable and resting on the floor and then check that the appliance is perfectly level (use a spirit level).
- If the floor is uneven, adjust the levelling feet as required (do not insert pieces of wood, cardboard etc. under the feet).
- The appliance can be installed in a 40 cm width and 63 cm depth space.

Note: It is important to avoid blocking the openings on the underside of the appliance when installing on a carpet floor.

ADJUSTMENT OF THE APPLIANCE

1. To move the appliance into its operating position: Pull the handle situated on the bottom of the front (optional on certain models) a little bit by hand and pull it in the final driving position by foot. Afterwards push the handle back into the original, stable position. The front feet can be adjusted in order to level the appliance.
2. Loosen the locknut using a wrench.
3. Adjust the height of the foot, turning it by hand.
4. Tighten the locknut by turning it anti-clockwise towards the appliance casing.

IMPORTANT: Do not run the appliance while it is standing on the trolleys.



INSTALLATION INSTRUCTIONS

WATER SUPPLY

- Water supply: cold water only
- Tap: 3/4" threaded hose connection
- Pressure: 10-100 N/cm² (1-10 bar).

Should the appliance be installed in a room which is subject to extremely low temperatures, you need to empty water at the end of each wash programme. Please follow the instructions given in the chapter titled "Draining Residual Water" and disconnect the water inlet hose.

WATER INLET HOSE(S)

1. The mesh filter supplied with the appliance must be inserted in the connection between the supply hose and the tap.
 2. Carefully screw the hose connection to the tap preferably by hand. Make sure there are no kinks in the hose and that it is not crushed.
 3. Check water-tightness of tap and appliance connections by turning the tap completely on.
- If the hose is too short, replace it with a suitable length of pressure resistant hose (10 bar min., EN 50065 approved type).
 - The appliance can be connected without a non-return valve.
 - Install the appliance in accordance with regulations of your local water company.

For Great Britain & Ireland only:

Water inlet:

- hot (see **A**) fill hose;
- and cold (see **B**) fill hose.

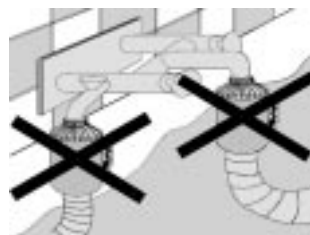
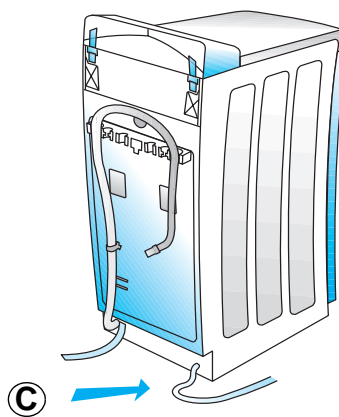
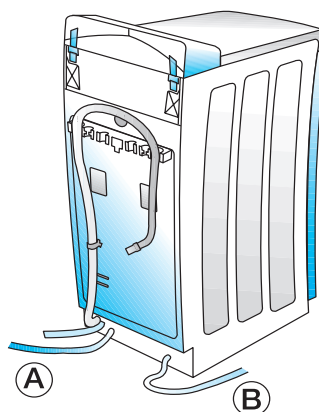
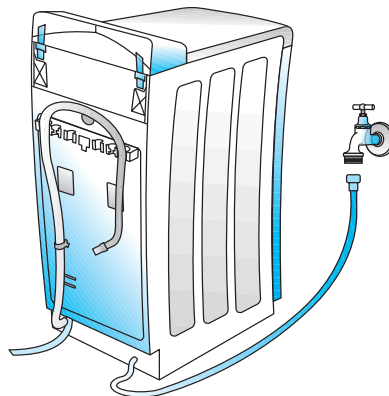
The warm water inlet temperature must not exceed 60° C.

WATER STOP ANTI-FLOODING SYSTEM

(depending on model):

- Screw the threaded connection with the filter into the union nut on the water tap. Open the water tap fully and check the water tightness of the connection point.
- The appliance must not be connected to the mixing tap of a non-pressurized water heater!
- The inlet hose (see arrow **C**) and the plastic enclosure at the tap connection contain electrical components.
- Do not cut the hose and do not immerse the plastic enclosure in water.
- If the flexible hose is damaged, unplug the appliance from the mains immediately.

If the hose is too short, replace it with a 3 m Water Stop hose (available from After-Sales Service or from your dealer). This operation must be carried out exclusively by a licensed electrician.



INSTALLATION INSTRUCTIONS

DRAIN HOSE

- Drain hose connection to water outlet.
- 1. Unhook the drain hose from the right and left hose connection, see **A** in figure.

Important:

Do NOT loosen the drain hose connection from the clip on the left side, see **B** in figure, otherwise there is the risk of leakage (danger of scalding with hot water).

2. Fix the "U" bend supplied (inside the drum) to the free end of the drain hose.
3. Fit the drain hose either to the siphon or hook it over the edge of a sink or bath tub with the "U" bend. Small hand basins are not suitable. The edge of the tub must be no higher than 100 cm above the floor.
4. If you need to add an extension, use a flexible hose of the same type and secure the unions with screw-on hose clips.

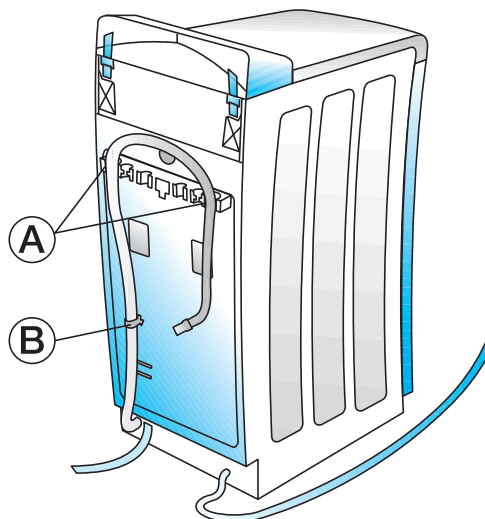
Maximum overall drain hose length: 2.50 m.

Maximum drain height ("U" bend): 100 cm.

Minimum drain height: 55 cm.

Important:

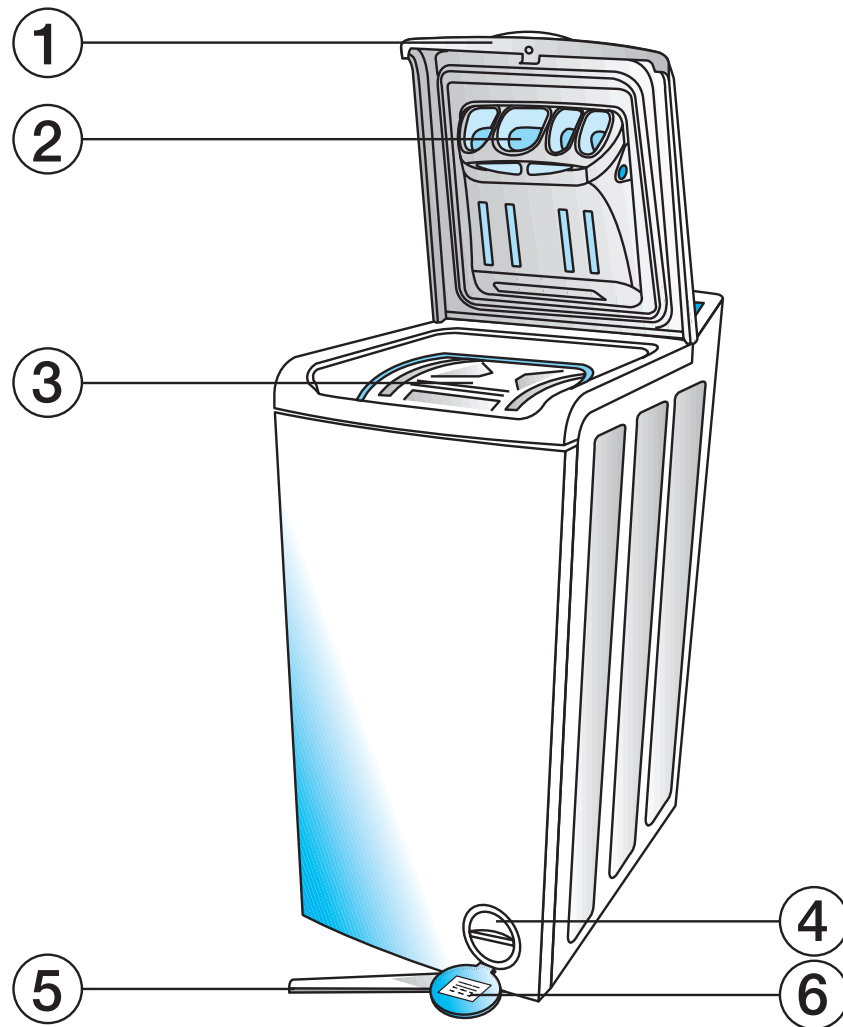
Make sure there are no kinks in the drain hose and take precautions against it falling while the appliance is running.



ELECTRICAL CONNECTIONS

- Electrical connections must be made in accordance with local regulations.
- The appliance must be connected to the mains exclusively by means of a socket with an earth connection in accordance with established regulations. The appliance must be earthed by law. The manufacturer declines all liability for damage to property or injury to persons or animals deriving either directly or indirectly from failure to observe the above directions.
- The data of voltage, power consumption and the required electrical protection are supplied on the rear of the appliance.
- The electrical power cable must be replaced, if necessary, exclusively by a licensed electrician.
- **The appliance conforms to European safety regulations, EC directive 93/68/EEC and standard EN 60555.**
- Do not use extension leads or multisockets.

WASHING MACHINE AND ACCESSORIES



1. Lid
2. Detergent dispenser
3. Drum flaps
4. Pump and foreign body trap
5. Mobility lever (depending on model)
6. After-Sales Service sticker (behind the foreign body trap cover).

PROTECTING THE ENVIRONMENT

- **Packing**
The packing material is 100% recyclable as indicated by the ♻ recycling symbol.
- **Appliance**
The appliance is built from recyclable materials. If you decide to scrap the appliance ensure you observe local waste disposal by-laws.
Before scrapping, cut off the plug and the power cable so the appliance cannot be connected to the mains.
- **Environmental tips**
 - If possible, always wash with a full load (depending on the programme) to save water and energy.
 - For lightly to averagely soiled laundry, use a programme without a prewash cycle.
 - Use low temperatures or short programmes for lightly soiled laundry.
 - Use a saving option (see programme chart) for small and lightly soiled loads and reduce the amount of detergent.
 - If you intend to dry the washing in a dryer, select maximum spin speed (according to the type of laundry) to reduce the energy consumption of the dryer.
 - Do not exceed the detergent measures indicated in the manufacturer's instructions.
 - Use stain removal products only when strictly necessary.


SAFETY INSTRUCTIONS

- The appliance conforms to European safety regulations and to Directive n. 93/68/EEC and standard EN 60555.
- Use the appliance only for domestic washing and for its intended applications.
- Ensure the installation and the electrical and water connections have been carried out in accordance with the manufacturer's instructions and in observance of local safety regulations (refer to "Installation instructions").
- Unplug the appliance before cleaning or maintaining the appliance.
- When the appliance is not in use switch it off and turn off the tap(s).
- Do not attempt to force the lid open.
- Do not allow children to play with the appliance or enter the drum.
- Packing materials can be dangerous for children: keep all packing materials (plastic bags, polystyrene, etc.) well out of their reach.

TRANSPORT / HANDLING

1. Unplug the appliance.
2. Turn off the tap(s).
3. Remove the water supply and drain hose.
4. Eliminate all water from the hoses and from the appliance (see "Draining Residual Water").
Be careful that the water is sufficiently cooled so as to avoid any accidents.
5. Transport the washing machine upright.

PREPARING THE WASH

1. **Sort the laundry according to:**
 - **Type of fabric / Care label symbol**
Cottons, mixed fibres, synthetics, wool, handwashable textiles.
 - **Colour**
Separate whites and coloured items. Wash new coloured items separately.
 - **Size**
Wash items of different sizes in the same load to improve washing efficiency and distribute the load more evenly inside the drum.
 - **Fabric delicacy**
Wash delicate articles separately: use a special programme for Pure New Wool , curtains and other delicates. Always remove curtain glides or wash curtains with the glides inside a cotton bag. Use the special programme for handwash fabrics. Wash stockings, belts and other small items or articles with hooks (e.g. bras) in special cotton bags for washing machines or in zipped pillow cases.
2. **Empty pockets**
Coins, safety pins and similar can damage your laundry and the appliance drum and tub.
3. **Fasteners**
Close zips and fasten buttons or hooks; loose belts or ribbons should be tied together.

WASHING AND CARING FOR SILK AND OTHER HANDWASHABLE ARTICLES

Washing (depending on model):

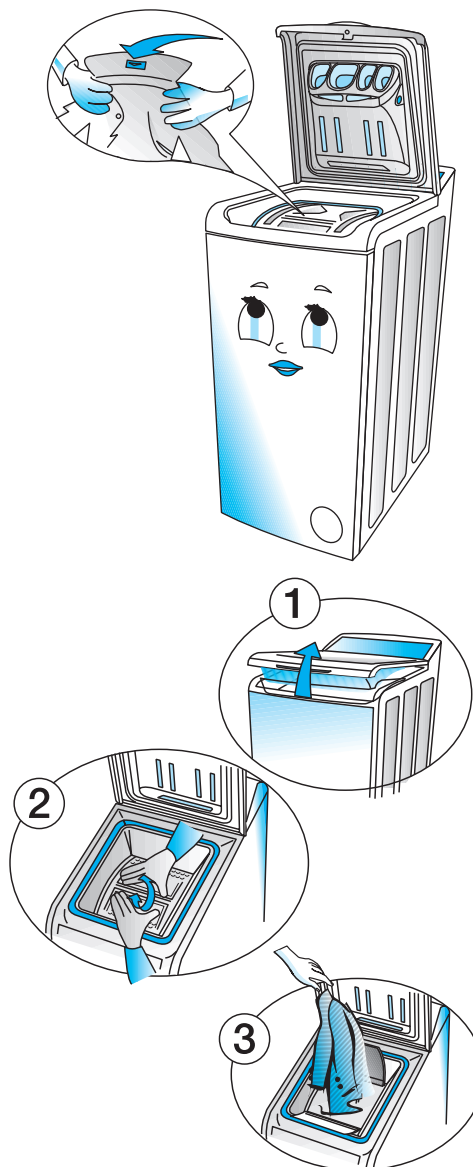
- To ensure correct care of delicate articles this programme has no spin cycle.
- If you select the special option Rinse Hold, don't leave garments to soak for too long, it is recommended not to use this function with this programme.

Drying and ironing:

- Open the garment out on a towel to absorb excess water without wringing (pat the garment lightly against the towel).
- Never dry silk garments in direct sunlight.
- Iron from the reverse side when the fabric is still slightly damp.
- To avoid water marks, do not spray with water and do not use a steam iron.

STAIN REMOVAL

- Blood, milk, egg and other organic substances are generally removed by the enzyme phase of the programme.
- To remove red wine, coffee, tea, grass and fruit stains etc. add a stain removing agent or a chlorine bleach.
- Particularly stubborn stains should be treated before the wash.



LOADING THE LAUNDRY

1. Lift the machine lid.
2. Open the drum by pressing the small flap and holding the large flap.
3. Unfold the laundry and place it loosely in the drum.
4. Close the drum flaps carefully and check if they are properly locked.

LOAD CAPACITY

See the maximum load on the programme chart.

Note: Overloading will lead to unsatisfactory washing results and creased laundry.

DETERGENT AND ADDITIVES

CHOOSING THE RIGHT DETERGENT

The type of detergent depends on:

- type of fabric (cottons, synthetics, delicate items, wool). You can use any make or type of detergent recommended for domestic washing machines.

Note: Use only specific detergents for wool.

- colour;
- washing temperature;
- degree and type of soiling.

Notes:

- Whitish residues on dark fabrics are caused by insoluble water softeners used in modern phosphate-free powder detergents. If you notice this problem, shake or brush the affected items or use a liquid detergent.
- Keep detergents and additives in a dry place and out of reach of children.
- Use only detergents and additives specifically produced for domestic appliances. If you use water softeners, descaling agents and dyes, make sure they are suitable for washing machine use.
- Do not use solvents (turpentine, benzene, etc.). Do not wash fabrics that have been treated with solvents or flammable liquids.

DOSAGE

Follow the instructions on the detergent pack in relation to:

- the degree and type of soiling;
- the size of the load;
 - full load: follow the detergent manufacturer's instructions;
 - half load: 3/4 the amount used for a full load;
 - minimum load (about 1 kg): half the amount used for a full load;
- water hardness in your area (ask for information from your water company): soft water requires less detergent than hard water.

Notes:

- Too much detergent can result in excess foam formation, which reduces washing efficiency. If the appliance detects excessive foam it may prevent spinning.
- The laundry will become grey if you use too little detergent. Too little detergent will also lead to increased scale deposits on the heating element and drum.
- If using chlorine bleach, follow the bleach instructions carefully. Overdosing the bleach can damage the wash.
- If the water pressure in your household is extremely low it is recommended to pour the detergent for the main wash directly on the drum.

WATER HARDNESS

Water hardness class	Characteristics	German scale °dH	French scale °fH	Clarke scale °eH
1	soft	0-7	0-12	0-9
2	average	7-14	12-25	9-17
3	hard	14-21	25-37	17-26
4	very hard	over 21	over 37	over 26

DYEING AND BLEACHING

Dyeing: Commercially available products usually consist of a dye colour, fixing agent and salt. For the effective use of the dye please follow strictly the manufacturer's instructions.

- Only use products recommended for washing machines.
- Plastic and rubber parts of the machine may be stained by dyes or bleaches.

STARCHING

Dissolve / dilute the starch, powder or liquid, in approximately 1 litre water outside of the washing machine in a small container.

Load the washing machine, close the drum flaps and pour the dissolved starch directly on the drum. Then close the lid, select the programme "Rinse and Spin" and start.

REMOVING THE FOREIGN BODY TRAP

WHEN SHOULD THE FOREIGN BODY TRAP BE EMPTIED?

The appliance is provided with a self-cleaning pump. The foreign body trap keeps objects like buttons, coins, safety pins, etc. which have been left in the laundry.

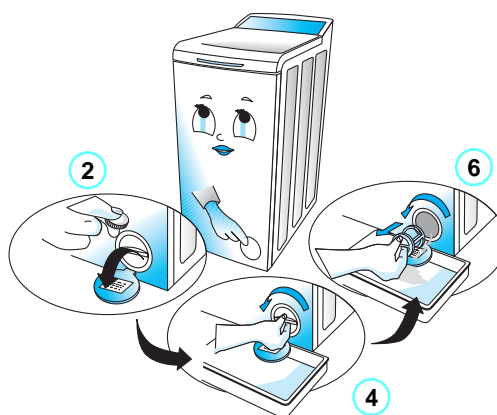
- Check the foreign body trap if the appliance is not draining properly or if it fails to perform spin cycles.
- Check the foreign body trap regularly, two or three times a year and clean it if necessary.

IMPORTANT: Make sure the water has cooled before draining.

REMOVING THE FOREIGN BODY TRAP

1. Unplug the appliance.
2. Open the foreign body trap cover with a coin.
3. Place a bowl beneath it.
4. Turn the foreign body trap slowly anti-clockwise until the grip is vertical; do not remove it as yet.
5. Wait until all the water has drained out.
6. Now unscrew the foreign body trap completely and extract it.
7. Remove any foreign items from the foreign body trap.

8. Make sure the pump impeller (in the housing behind the foreign body trap) is not obstructed.
9. Insert the foreign body trap and screw it fully down in a clockwise direction (until the grip is horizontal).
10. Pour 0.5 litres of water into the machine via the drum and check that water does not leak from the foreign body trap.
11. Close the cover.
12. Plug in the appliance to the electrical outlet.



DRAINING RESIDUAL WATER

WHEN SHOULD THE RESIDUAL WATER BE DRAINED?

- Before transporting the machine.
- If the appliance is installed in a room subject to sub-zero temperatures. It is advisable to drain residual water from the machine, the drain hose and the inlet hose after each wash cycle.

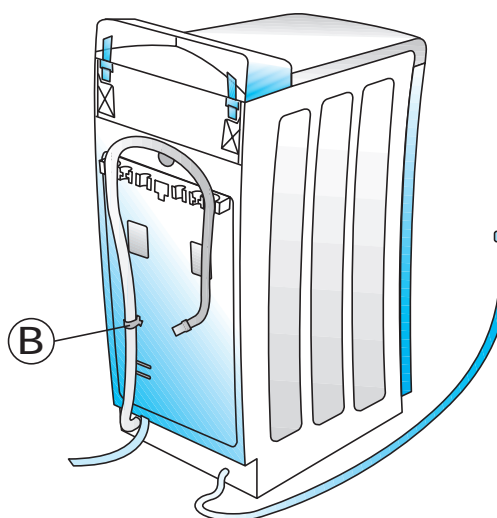
DRAINING RESIDUAL WATER

1. Switch off the appliance.
2. Unplug the machine from the mains.
3. Close the tap(s), loosen the inlet hose(s) from the machine and let the water drain out.
4. Remove the foreign body trap, let the water drain out and close it again.
5. Open the clip for the drain hose fixation on the rear part of the machine (see **B** in figure).
6. Lower the drain hose into a bowl and let the water drain.
7. Wait until the flow stops.
8. Fix the drain hose again to the clip.
9. Plug in the appliance to the electrical outlet.

Important:

- Before using the machine again, pour about 1 litre of water into the drum to reactivate the "Eco system" (depending on model).

- Before starting a new wash cycle screw the inlet hose(s) to the machine by hand. Check water-tightness of washing machine connections by turning the tap(s) completely on.
- Replace the drain hose with the "U" bend and fix it.



MAINTENANCE AND CLEANING

APPLIANCE EXTERIOR AND CONTROL PANEL

- Clean using normal household cleaner (do not use abrasive products).
- Dry with a soft cloth.

DOOR SEAL

- Clean with a damp cloth when necessary.

DISPENSER CLEANING INSTRUCTIONS

1. Push in the buttons on each side of the dispenser.
2. Pull the dispenser toward you and remove.
A small quantity of water can remain in the soap dispenser. It is advisable to carry the dispenser in an upright position.
3. Wash the dispenser using running water.
Note: The siphon caps in the dispenser are also removable for cleaning.
4. Replace the siphon caps in the dispenser (if removed). Make sure that they lock in place.
5. Replace the dispenser by locating the bottom tabs in the door holes and pivot until both of the upper buttons lock.



WATER INLET HOSE(S)

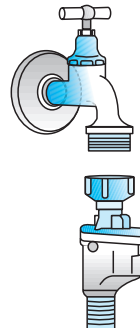
- Periodically check the hose for brittleness and cracks and replace if necessary.

WATER HOSE MESH FILTERS

- Check and clean regularly.

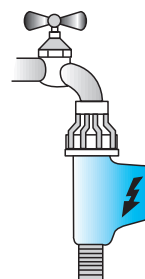
For appliances with safety hose

1. Unplug the appliance.
2. Turn off the tap.
3. Unscrew the hose from the tap.
4. Clean the mesh filter carefully under running water without removing it.
5. Screw the hose connection back onto the tap by hand.
6. Unscrew the hose from the appliance.
7. Remove the filter from the appliance connection with pliers and clean it.
8. Refit the filter and screw the hose connection to the appliance.
9. **Turn on the tap to check that the connections are completely watertight.**
10. Plug in the appliance to the electrical outlet.



For appliances with Water Stop hose

1. Unplug the appliance.
2. Turn off the tap.
3. Unscrew the hose from the tap.
4. Remove the loose mesh filter only and clean it.
5. Refit the filter and screw the Water Stop hose connection to the tap.
6. **Turn on the tap to check that the connections are completely watertight.**
7. Plug in the appliance to the electrical outlet.

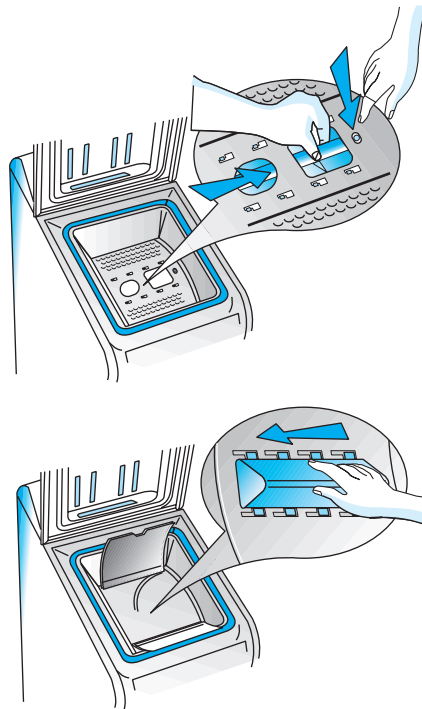


MAINTENANCE AND CLEANING

RECOVERING AN OBJECT THAT FALLS BETWEEN THE DRUM AND THE TUB

If accidentally an object falls between the drum and the tub you can recover it thanks to a removable plastic lifter:

1. Unplug the appliance.
2. Remove the laundry from the drum.
3. Close the drum flaps and turn the drum to the opposite of the flaps.
4. Press the plastic tip while sliding the plastic lifter from left to right.
The plastic lifter will fall into the drum.
5. Open the drum: through the hole inside the drum you can recover the object.
6. Refit the plastic lifter from inside the drum:
Position the plastic tip above the hole on the right side of the drum.
Then slide the plastic lifter from right to left until it clips.
7. Plug in the appliance to the electrical outlet.



TROUBLESHOOTING GUIDE

This appliance is equipped with safety functions which detect faults at an early stage and react appropriately.

Often, however, the faults detected are small enough to be solved in a matter of minutes.

The appliance will not start, no lamp lights up.

Check whether:

- the appliance is plugged in;
- the wall socket is functioning correctly (use a table lamp or similar).

The appliance will not start, but the pilot light is on.

Check whether:

- the appliance lid is properly closed;
- a programme has been selected;
- the programme is started;
- the water tap is open.

The appliance stops during the programme.

Check whether:

- the "Rinse Hold" button is pressed: terminate this option;
- the water tap is open;
- the pump / foreign body trap are blocked (see "Removing the Foreign Body Trap");
- the Water stop could be activated (see "Water stop fault").

Insufficient or no water supply.

Check whether:

- the water tap is completely open, and the water supply pressure is sufficient;
- the water inlet hose is kinked;
- the mesh filters are clogged (see "Maintenance and Cleaning" / "Water Hose Mesh Filters");
- the water inlet hose is frozen.

Reselect the desired programme and start again to continue with the programme (do not add detergent for this programme).

The appliance does not drain out the water.

Check whether:

- drain hose is kinked (see "Installation Instructions");
- the pump/ foreign body trap are blocked (see "Removing the Foreign Body Trap");

IMPORTANT: Before draining, allow the wash water to cool down.

- the drain hose is frozen.

Reselect the desired programme and start again to continue with the programme (do not add detergent for this programme).

If the fault re-occurs, contact After-Sales Service (see "After-Sales Service").

- the "Rinse Hold" button is pressed: terminate this option.

Detergent and additive product residues in dispenser at end of wash.

Check whether:

- the siphon is correctly installed and clean (see "Maintenance and Cleaning" / "Dispenser Cleaning Instructions");
- enough water is being supplied. The mesh filters could be clogged (see "Maintenance and Cleaning" / "Water Hose Mesh Filters").

The appliance vibrates during the spin cycle.

Check whether:

- the appliance is level and solidly installed on all feet (see "Installation instructions");
- the transport screws and transport bar have been removed. Before starting up the appliance, the transport screws and the transport bracket must be removed (see "Installation instructions").

Final spin results are poor.

- the appliance has an imbalance detection and correction system. If individual heavy articles are loaded (bathmat, bathrobe, etc.) this system may reduce the spin speed automatically to protect the appliance. It may even interrupt the spin cycle altogether, if the imbalance is too great after several spin starts;
- if the laundry is too humid at the end of the cycle, add more articles of laundry to balance the load and repeat the spin cycle;
- excessive foam formation may prevent spinning. Use less detergent.

Check whether:

- the pump impeller is obstructed (see "Removing the Foreign Body Trap");
- the lid was opened during the delicate or wool programme. Close the lid and select a spin programme.

Water stop fault (depending on model).

- The Water stop can be released by:
 1. too much foam;
 2. a leak in the water hose or appliance.
- Close the tap, switch off the appliance and unplug it.
- Evacuate water from the bottom tray by tilting the appliance to the front.

Then:

- Turn on the tap, plug in the appliance to the electrical outlet and start again. The programme will continue (do not add detergent for this programme).

If the fault recurs, carry out the above steps again and contact After-Sales Service (see "After-Sales Service").

AFTER-SALES SERVICE



Before contacting After-Sales Service:

1. Try to solve the problem (see "Troubleshooting Guide").
2. Restart the programme to see if the fault is repeated.

If after the above checks the appliance does not work properly, get in touch with the nearest After-Sales Service Centre.

Please give:

- a short description of the fault,
- the exact type and model of the appliance,
- the number after the word SERVICE of the After-Sales Service sticker behind the foreign body trap cover,

SERVICE 0000 000 00000



- Your complete address (including postal code) and telephone number.