





Programmes	°C	max.	Type of laundry	Additional functions: information
<b>Cottons</b> +  Prewash	30, 40, 60, 90 °C 40 °C	7 kg/ 4 kg*	Hard-wearing fabrics, heatresistant fabrics made of cotton or linen	⇒  SpeedPerfect*,  EcoPerfect,  Reduced Ironing, Aqua Plus
<b>Easy-Care</b>	30, 40, 60 °C	3 kg	Easy-care fabrics made of cotton, linen, synthetic fibres or blended fabrics	⇒  SpeedPerfect,  EcoPerfect,  Reduced Ironing, Aqua Plus
<b>Mixed Load</b>	40 °C		Fabrics made of cotton or easy-care fabrics	⇒  SpeedPerfect,  EcoPerfect,  Reduced Ironing, Aqua Plus; different types of laundry can be washed together
<b>Delicate/Silk</b>	30 °C		For delicate, washable fabrics, e.g. made of silk, satin, synthetic fibres or blended fabrics (e.g. curtains)	⇒  SpeedPerfect,  EcoPerfect,  Reduced Ironing, Aqua Plus; No spin between rinse cycles
<b>Wool</b>	cold, 30 °C	2 kg	Hand- or machine-washable fabrics made of wool or containing wool	Particularly gentle wash programme to avoid shrinkage of laundry, longer programme breaks (fabrics rest in the detergent solution)
<b>SuperQuick 15*</b>	30 °C		Easy-care fabrics made of cotton, linen, synthetic fibres or blended fabrics	Short programme, approx. 15 minutes, suitable for lightly soiled laundry
<b>Additional programmes</b>				<b>Rinse/Spin, Drain</b>
* Reduced load for additional  SpeedPerfect function i As a <b>short programme</b> , <b>Mixed Load 40 °C</b> , with a <b>maximum spin speed</b> , is ideal. Programmes without pre-wash - add detergent to compartment <b>II</b> , programmes with pre-wash - distribute the detergent between compartments <b>I</b> and <b>II</b> .				

Robert Bosch Hausgeräte GmbH  
Carl-Wery-Str. 34  
81 739 München / Deutschland

WAE2836GBB ...



## Safety instructions

- Read the instruction manual and installation instructions and all other information enclosed with the washing machine and act accordingly.
- Retain the documents for subsequent use.
- Risk of electric shock**
  - Never pull the cable to disconnect the mains plug.
  - Never insert/disconnect the mains plug with damp hands.
- Danger to life**
  - For worn-out appliances:
    - Disconnect the mains plug.
    - Sever the mains cable and discard along with the plug.
  - Destroy the lock on the washing machine door. This will prevent children from locking themselves in and risking their lives.
- Danger of suffocation**
  - Keep packaging, film and packaging parts out of the reach of children.
- Risk of poisoning**
- Risk of explosion**
  - Keep detergents and care products out of the reach of children.
  - Items of laundry pretreated with cleaning agents containing solvents, e.g. stain remover / cleaning solvent may lead to an explosion after being loaded into the washing machine. Rinse items of laundry thoroughly by hand beforehand.
- Risk of injury**
  - The washing machine door can become very hot.
  - Be careful when draining hot detergent solution.
  - Do not climb onto the washing machine.
  - Do not lean on the open washing machine door.
  - Do not reach into the drum if it is still rotating.
  - Be careful when opening the detergent drawer while the machine is in operation.

## Consumption values

depending on model

Programme	Load	Electricity***	Water***	Programme duration***
Cottons 30 °C*	7 kg	0,55 kWh	60 l	02:36 h
Cottons 40 °C*	7 kg	0,69 kWh	60 l	02:36 h
Cottons 60 °C*	7 kg	1,33 kWh	60 l	02:41 h
Cottons 90 °C	7 kg	2,00 kWh	64 l	02:48 h
Easy-Care 40 °C*	3 kg	0,55 kWh	55 l	01:37 h
Mixed Load 40 °C	3 kg	0,48 kWh	32 l	01:03 h
Delicate/Silk 30 °C	2 kg	0,21 kWh	31 l	00:41 h
/ Wool 30 °C	2 kg	0,19 kWh	39 l	00:40 h

\* Programme setting for testing in accordance with valid standard EN60456. Note on comparative tests: For testing the test programmes, wash the specified load using the maximum spin speed.

Programme	Additional function	Load	Annual energy consumption	Annual water consumption
Cottons 40/60 °C	EcoPerfect**	7/3,5 kg	197 kWh	10560 l

\*\* Programme setting for testing and energy labelling in accordance with EU directive 2010/30/EU with cold water (15 °C).  
\*\*\* The values deviate from the indicated values depending on water pressure, hardness, and inlet temperature, ambient temperature, type, amount and soiling of the laundry, detergent used, fluctuations in the power supply and selected additional functions.

## Care

- Before washing for the first time**
  - Do not load any laundry into the machine. Turn on the tap. Add the following to compartment **II**:
    - approx. 1 litre water
    - detergent (dosage according to the manufacturer's instructions for light soiling and the appropriate degree of water hardness)
  - Set the programme selector to **Easy-Care 60 °C** and select **Start/Reload**. At the end of the programme, turn the programme selector to **Off**.
- Machine housing, control panel**
  - Wipe with a soft, damp cloth.
  - Do not use any abrasive cloths, scourers or cleaning agents (stainless steel cleaners).
  - Remove detergent and cleaning agent residue immediately.
  - Do not clean with a jet of water.
- Cleaning the detergent drawer ...**
  - ... if it contains detergent or fabric softener residues.
    - Pull out, press insert down, remove draw completely.
    - To remove the insert: press the insert upwards from below with your finger.
    - Clean the detergent dispenser tray and insert with water and a brush and dry it.
    - Attach the insert and engage (connect the cylinder to the guide pin).
    - Push in the detergent drawer.

- Leave the detergent drawer open so that any residual water can evaporate.
- Drum**
  - Leave the washing machine door open so that the drum can dry out.
  - Rust stains - use chlorine-free cleaning agent, not steel wool.
- Descaling**
  - Ensure there is no laundry in the machine
  - Descalc the appliance according to the descaler manufacturer's instructions. This should not be necessary if the correct dosage of detergent is used.

- Emergency release, e.g. in the event of a power cut**
  - The programme continues to run when the power has been restored. However, if the laundry has to be removed, the washing machine door can be opened as follows:
    - Risk of scalding.** The detergent solution and laundry may be hot. If possible, leave it to cool down. Do not reach into the drum if it is still rotating. Do not open the washing machine door if water can be seen through the glass.
- Turn the programme selector to **Off** and disconnect the mains plug.
  - Drain the detergent solution → [page 10](#).
  - Pull the emergency release downwards with a tool and release. Washing machine door can then be opened.

## Information on the display panel

depending on model

<b>F: 16</b>	Close the washing machine door properly; laundry may be caught.
<b>F: 17</b>	Open the tap completely, supply hose kinked or trapped; Clean the filter → <a href="#">page 10</a> , Water pressure too low.
<b>F: 18</b>	Detergent solution pump blocked; Clean the detergent solution pump → <a href="#">page 10</a> . Drainage hose / waste pipe blocked; Clean the drainage hose at the siphon → <a href="#">page 10</a> .
<b>F: 21</b>	Motor fault. Call customer services.
<b>F: 23</b>	Water in the base tub, appliance leaking. Call customer services.

## Maintenance

- Detergent solution pump**
  - Turn the programme selector to **Off** and disconnect the mains plug.
    - Open and remove the service flap.
    - For models with a drainage hose:** Remove the drainage hose from the retainer and pull it from the housing. Remove the container. Remove the sealing cap, allow the detergent solution to flow out. Replace the sealing cap and place the drainage hose in the retainer.
    - For models without a drainage hose:** Carefully unscrew the pump cover until the detergent solution begins to flow out. When the service flap is half full, close the pump cover and empty the service flap. Repeat the above steps until all the detergent solution has completely drained out.
    - Carefully unscrew the pump cover (residual water).
    - Clean the interior, pump cover thread and pump housing (the impeller in the detergent solution pump must rotate).
    - Replace the pump cover and screw it tightly.
    - Place the service flap back on and close.

- To prevent unused detergent from flowing straight into the drain during the next wash: Pour 1 litre of water into compartment **II** and start the **Drain** programme.

- Drainage hose at the siphon**
  - Turn the programme selector to **Off** and disconnect the mains plug.
    - Loosen the hose clamp, carefully remove the drainage hose (residual water).
    - Clean the drainage hose and siphon connecting piece.
    - Reattach the drainage hose and secure the connection with the hose clamp.

- Filter in the water supply**
  - Risk of electric shock!** Do not immerse the HydroSafe safety device in water (contains an electric valve).
  - Reduce the water pressure in the supply hose:
    - Turn off the tap.
    - Select any programme (except for **Rinse/Spin / Drain**).
    - Choose **Start/Reload**. Let the programme run for approximately 40 seconds.
    - Turn the programme selector to **Off**. Disconnect the mains plug.
  - Clean the filter:
    - Depending on model: Disconnect the hose from the tap. Clean the filter using a small brush.
    - and/or for Standard and Aqua-Secure models:
      - Remove the hose on the rear of the appliance, Remove the filter with pliers and clean.
    - Connect the hose and check for leaks.

## What to do if ...

- Water is leaking out.
  - Attach/replace the drainage hose correctly.
  - Tighten the screw connection of the supply hose.
- No water supply. Detergent not dispensed.
  - Start/Reload** not selected?
  - Tap not turned on?
  - Filter blocked? Clean the filter → [page 10](#).
  - Supply hose kinked or trapped?
- Washing machine door cannot be opened.
  - Safety function active. Programme stopped? → [page 4](#).
  - Is **Rinse Hold** (without final spin) selected? → [page 3](#), [page 9](#).
  - Can be opened by emergency release only? → [page 9](#).
- Programme does not start.
  - Start/Reload** or **Ready in** time selected?
  - Washing machine door closed?
  - Childproof lock active? Deactivate → [page 5](#).
- Detergent solution is not drained.
  - Is **Rinse Hold** (without final spin) selected? → [page 3](#), [page 4](#).
  - Clean the detergent solution pump → [page 10](#).
  - Clean the waste pipe and/or drainage hose.
- Water not visible in the drum.
  - Not a fault - water below the visible area.
- Unsatisfactory spin result. Laundry wet/too damp.
  - Not a fault - the unbalanced-load detection system has cancelled the spin cycle because of uneven distribution of the laundry. Distribute small and large items of laundry evenly inside the drum.
  - Reduced Ironing** selected? → [page 5](#).
  - Selected speed too low? → [page 5](#).
- The programme duration changes during the wash cycle.
  - Not a fault - the programme sequence is optimised for the particular wash process. This may result in changes to the programme duration in the display field.
- Spin cycle performed several times.
  - Not a fault - unbalanced load detection system adjusts the imbalance.
- Residual water in the compartment for care products.
  - Not a fault - the action of the care product is not affected.
  - Clean the insert if necessary → [page 9](#).
- Odour formation in the washing machine.
  - Run programme **Cottons 90 °C** without laundry. Use standard detergent.
- Status display flashes. Foam may be coming out of the detergent drawer.
  - Too much detergent used? Mix 1 tablespoon of fabric softener with ½ litre of water and pour into dispenser **II** (not for outdoor and down-filled textiles!).
  - Reduce the detergent dosage for the next wash cycle.
- Intense noise formation, vibrations and "wandering" during the spin cycle.
  - Are the appliance feet fixed?
  - Secure the appliance feet → [Installation instructions](#).
  - Transportation safety devices removed? Remove the transportation safety devices → [Installation instructions](#).
- Noises during spin and drain cycles.
  - Clean detergent-solution pump → [page 10](#).
- Display panel/indicator lamps do not function during operation.
  - Power cut?
  - Fuses triggered? Reset/change the fuse.
  - If the fault occurs repeatedly, call customer services.
- Programme sequence longer than usual.
  - Not a fault - unbalanced load detection system adjusts imbalance by repeatedly distributing the laundry.
  - Not a fault - foam detection system active - adds an additional rinse cycle.
- Detergent residues on the laundry.
  - Occasionally, phosphate-free detergents contain water-insoluble residues.
  - Select the **Rinse/Spin** cycle or brush out the laundry after washing.

If you cannot correct a fault yourself (switching on/off) or a repair is required:

- Turn the programme selector to **Off** and remove the mains plug from the socket.
- Turn off the water supply and call customer services → [Installation instructions](#).



en Instruction manual



# Your washing machine

**Congratulations** - You have opted for a modern, high-quality domestic appliance manufactured by Bosch. This washing machine is distinguished by its economical water and energy consumption. Each machine that leaves our factory has been inspected thoroughly to ensure that it functions properly and is in perfect condition.

Further information: [www.bosch-home.com](http://www.bosch-home.com)

You can find the contact details for your nearest after-sales service here or in the after-sales service directory (depending on model).  
**GB** 0844 8928979

Calls from a BT landline will be charged at up to 3 pence per minute. A call set-up fee of up to 6 pence may apply.  
**IE** 01450 2655

## Environmentally friendly waste disposal



All packaging must be disposed of in accordance with environmental guidelines.

This appliance is certified in accordance with European Directive 2002/96/EEC on waste electrical and electronic equipment (WEEE).

This directive provides the framework for the EU-wide collection and reuse of used appliances.

## Contents

	Page
Intended use	1
Programmes	1
Setting and adjusting the programme	3
Washing	3/4
After washing	4
Individual settings	5/6
Important information	6
Overview of programmes	7
Safety instructions	8
Consumption values	8
Care	9
Information on the display panel	9
Maintenance	10
What to do if...	11



### Protection of the environment/Conservation tips

- Always fill the washing machine with a maximum amount of laundry for the relevant programme.
- Wash normally soiled laundry without a pre-wash.
- Instead of **Cottons 90 °C**, choose the programme **Cottons 60 °C** with the additional function **EcoPerfect**. Comparable cleaning result with significantly lower energy consumption.
- Measure the detergent according to the manufacturer's instructions and water hardness.
- If the laundry is then dried in the tumble dryer, select the spin speed according to the instructions of the dryer manufacturer.

## Intended use

- for domestic use only,
- for washing machine-washable fabrics and hand-washable wool in detergent solution,
- to be operated with cold drinking water and commercially available detergents and care products which are suitable for use in washing machines.



- Do not leave children unattended near the washing machine.
- The washing machine is not to be used by children or persons not familiar with the operating instructions.
- Keep pets away from the washing machine.



Read these instructions and the separate installation instructions before operating the washing machine.

## Programmes

Detailed overview of programmes → page 7.

Spin speed can be selected individually, irrespective of the selected programme and programme progress.

<b>Cottons</b>	Hard-wearing fabrics
+  Prewash	Hard-wearing fabrics, pre-wash at 30 °C
<b>Mixed Load</b>	Different types of laundry
<b>SuperQuick 15'</b>	Short programme
Rinse/Spin	Laundry washed by hand, <b>Aqua Plus</b> button activated; if only using the spin cycle, deactivate the button
Drain	Drain rinsing water for <b>Rinse Hold</b> (without final spin)
<b>Wool</b>	Hand/machine-washable wool
<b>Delicate/Silk</b>	Delicate washable fabrics
<b>Easy-Care</b>	Easy-care fabrics

## Preparation



Correct installation according to the separate *Installation instructions*.



### Checking the machine

- Never use a damaged machine.
- Inform customer service.



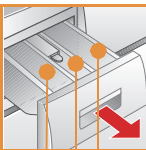
### Connecting the mains plug



Make sure your hands are dry. Take hold of the plug only.



### Turning the tap on

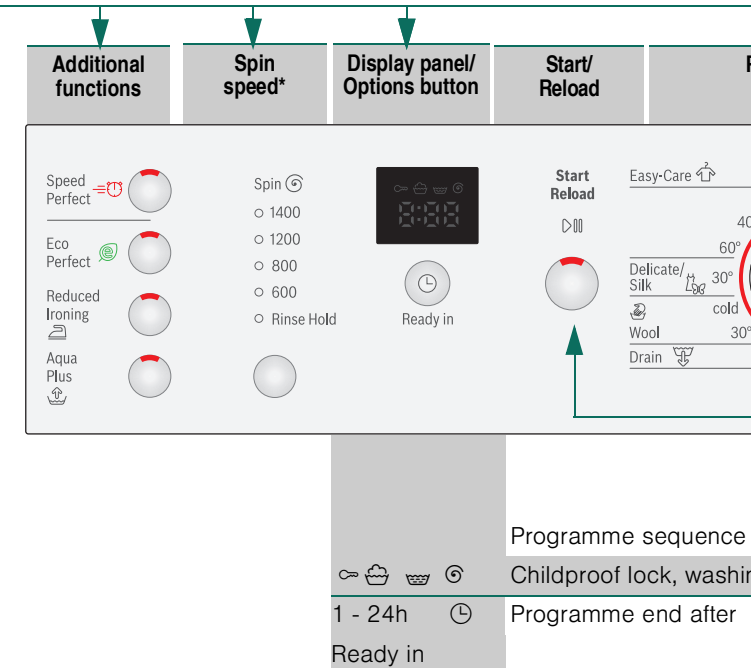


**Compartment II:** Detergent for the main wash, water softener, bleach, stain remover

**Compartment ⌘:** Fabric softener, starch

**Compartment I:** Detergent for pre-wash

(\*depending on the model)



**Before washing for the first time**  
Wash once without any laundry → page 9.

## Sorting and loading laundry

Follow the manufacturer's care information. According to the information on the care labels. According to type, colour, soiling and temperature. Do not exceed the maximum load → page 7.

Observe the important information → page 6.

Insert large and small items of laundry.

Close the washing machine door. Take care not to trap items of laundry between the washing machine door and the rubber seal.

## Add detergent and care products

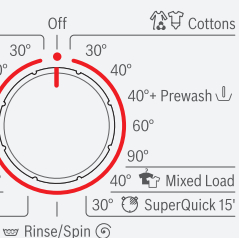
Measure accordingly:

Amount of laundry, soiling, water hardness (ask your water supply company) and manufacturer's instructions. Pour liquid detergent into the appropriate dispenser and place in the drum.

**i** Dilute viscous fabric softener and fabric conditioner with water. This prevents blockages.

## Setting\*\* and adjusting programmes

### Programme selector



displays:

ng, rinsing, spinning

**i** \*\*If the ∞ symbol flashes in the display panel, the childproof lock is active → deactivate, page 5.

Additional functions, the options button and spin speeds → Individual settings, page 5.

**i** All buttons are sensitive and need only to be touched lightly. Press and hold the options and spin speed buttons to run through the setting options automatically.

**▶▶ Start/Reload**

**i** Programme selector for switching the machine on and off and for selecting the programme. Can be turned in either direction.

## Washing

Detergent drawer with compartments I, II, ☼

Drum

Control panel

Washing machine door

Service flap

## Washing

## Removing the washing

Open the washing machine door and remove the washing. If **Rinse Hold** (without final spin) is active: Turn the programme selector to **Drain** or select the spin speed. Press **▶▶ Start/Reload**.



- Remove any foreign objects - risk of rusting.
- Leave the washing machine door and detergent drawer open so that any residual water can evaporate.

## Turning the tap off

Not required for Aqua-Stop models → Refer to installation instructions.

## Switching off

Turn the programme selector to **Off**.

## End of programme when ...

... **▶▶ Start/Reload** flashes and **-0-** appears on the display panel.

## Interrupting the programme

Programmes at high temperatures:

- Cool washing: Select **Rinse/Spin**.
- Press **▶▶ Start/Reload**.

Programmes at lower temperatures:

- **Rinse/Spin** (deactivate **Aqua Plus** button) or select **Drain**.
- Press **▶▶ Start/Reload**.

## Changing the programme, if ...

... you have selected the wrong programme by mistake:

- Reselect the programme.
- Press **▶▶ Start/Reload**. The new programme starts from the beginning.

## Reloading laundry, if ... → page 5

... **▶▶ Start/Reload** selected and then **YES** is lit in the display panel. If **NO** is lit, the washing machine door cannot be opened.

- Press **▶▶ Start/Reload**.

# Individual settings

## ⌚ Ready in options button

When you select the programme, the relevant programme duration is displayed. You can delay the start of the programme before it begins. The Ready in- time can be set in increments of one hour up to a maximum of 24 hours. Press the ⌚ **Ready in** button repeatedly until the required number of hours is displayed (h = hour). Choose ▷ Start/Reload. It is not possible to make adjustments once the programme has started.

## 🌀 Spin / without final spin

Before and while the selected programme is running, you can set the spin speed or **Rinse Hold** (without final spin, laundry soaks in the last rinsing water, display panel --). The effects depend on the programme progress. The maximum selectable spin speed depends on the model and on which programme is currently selected.

## Additional functions → and overview of programmes, see page 7

### ⚙️ SpeedPerfect

For washing in a shorter time with a washing outcome comparable to that of the standard programme. Maximum load → Overview of programmes, page 7.

### 🌿 EcoPerfect

For saving energy with a washing performance comparable to that of the standard programme.

### 👕 Reduced Ironing

Special spin sequence with subsequent fluffing. More gentle final spin - residual moisture in the laundry slightly increased.

### 💧 Aqua Plus

Increased water level and additional rinse cycle, extended washing time. For areas with very soft water or for further enhancing the spin result.

## 🔒 Childproof lock and reloading

### 🔒 Childproof lock/ Appliance lock

You can lock the washing machine to prevent the functions you have set from being changed inadvertently.

**ON /OFF:** Press and hold the ▷ Start/Reload button for approx. 5 seconds after the start/end of the programme.

Note: The childproof lock can remain activated until you wish to start the next programme, even after switching off the machine.

Then you can deactivate the childproof lock before the start of the programme and activate it again as necessary once the programme has started.

### YES Reload

If you want to add additional items of laundry after the programme has started, choose ▷ Start/Reload. The machine checks whether reloading is possible.

**YES** is lit: Reloading is possible.

**NO** flashes: wait until **YES** lights up.

Note: do not open the door until **YES** is lit.

**NO:** It is not possible to reload.

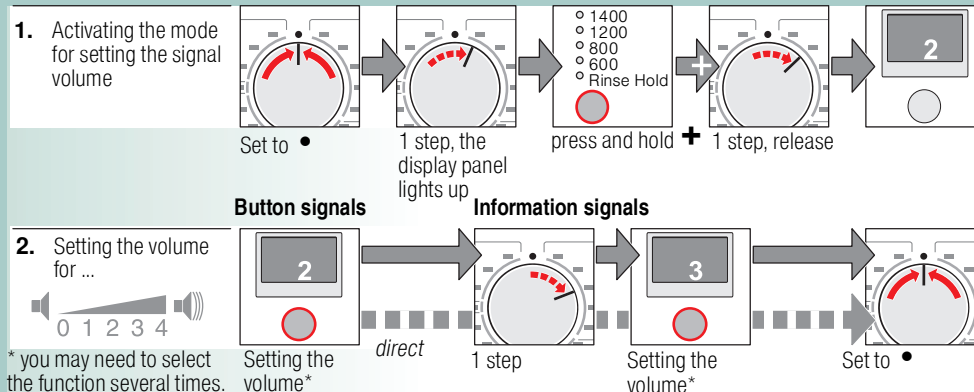
Note: For safety reasons, the washing machine door remains locked when the water level and/or temperature is high, or during spinning. To continue the programme, press the ▷ Start/Reload.

## ▷ Start/Reload

To start the programme or to subsequently load additional laundry, and to activate/deactivate the childproof lock.

# Individual settings

## Signal



## Important information



### Protecting the laundry and the machine

- When determining the dosage of all washing powders, additives and cleaning agents, you must follow the manufacturer's instructions.
- Empty pockets.
- Look out for metal items (paperclips, etc.).
- Wash delicates in a laundry bag (tights, curtains, underwired bras).
- Fasten zips, do up any buttons.
- Brush sand out of pockets and collars.
- Remove curtain fittings or place in the laundry bag.



### Laundry with varying degrees of soiling

light	Wash new items of clothing separately.
	Do not pre-wash. If required, choose the additional function ⚙️ <b>SpeedPerfect</b> .
	Pre-treat any stains as necessary.
intense	Do not load as much laundry. Choose a programme with pre-wash.



### Soaking Load laundry of the same colour

Pour soaking agent/detergent into compartment II in accordance with the manufacturer's instructions. Turn the programme selector to 🧺 **Cottons 30 °C** and press ▷ Start/Reload. After approx. 10 minutes, press ▷ Start/Reload to pause the programme. Once the required soaking time has elapsed, press ▷ Start/Reload again to continue the programme, or select a different programme.



### Starching Laundry must not be treated with fabric softener

Starching is possible in all wash programmes if liquid starch is used. Pour the starch in accordance with the manufacturer's instructions into fabric softener compartment 🧺 (rinse first if necessary).



### Dyeing/Bleaching

Dye should only be used in normal household quantities. Salt may damage stainless steel. Always follow the dye manufacturer's instructions! Do **not** use the washing machine for bleaching clothes!

Programmes	°C	max.	Type of laundry	Additional functions; information
<b>Cottons</b>	30, 40, 60, 90 °C	7 kg/4 kg*	Hard-wearing fabrics, heat-resistant fabrics made of cotton or linen	≡  SpeedPerfect*,  EcoPerfect,  Aqua Plus
<b>Easy-Care</b>	30, 40, 60 °C		Easy-care fabrics made of cotton, linen, synthetic fibres or blended fabrics	≡  SpeedPerfect,  EcoPerfect,  Aqua Plus
<b>Mixed Load</b>	40 °C	3 kg	Fabrics made of cotton or easy-care fabrics	≡  SpeedPerfect,  EcoPerfect,  Aqua Plus; different types of laundry can be washed together
<b>Delicate/Silk</b>	30 °C		For delicate, washable fabrics; e.g. made of silk, satin, synthetic fibres or blended fabrics (e.g. curtains)	≡  SpeedPerfect,  EcoPerfect,  Aqua Plus; No spin between rinse cycles
<b>Wool</b>	cold, 30 °C	2 kg	Hand- or machine-washable fabrics made of wool or containing wool	Particularly gentle wash programme to avoid shrinkage of laundry, longer programme breaks (fabrics rest in the detergent solution)
<b>SuperQuick 15'</b>	30 °C		Easy-care fabrics made of cotton, linen, synthetic fibres or blended fabrics	Short programme, approx. 15 minutes, suitable for lightly soiled laundry
<b>Additional programmes</b>				<b>Rinse/Spin</b> , <b>Drain</b>

\* Reduced load for additional SpeedPerfect function

i As a **short programme**, **Mixed Load 40 °C**, with a **maximum spin speed**, is ideal.

Programmes without pre-wash - add detergent to compartment **II**, programmes with pre-wash - distribute the detergent between compartments **I** and **II**.

9202 / 9000746978



Robert Bosch Hausgeräte GmbH  
Carl-Wery-Str. 34  
81739 München / Deutschland

WAE28368GB ...



## Safety instructions

- Read the instruction manual and installation instructions and all other information enclosed with the washing machine and act accordingly.
- Retain the documents for subsequent use.

### Risk of electric shock

- Never pull the cable to disconnect the mains plug.
- Never insert/disconnect the mains plug with damp hands.

### Danger to life

For worn-out appliances:

- Disconnect the mains plug.
- Sever the mains cable and discard along with the plug.
- Destroy the lock on the washing machine door. This will prevent children from locking themselves in and risking their lives.

### Danger of suffocation

- Keep packaging, film and packaging parts out of the reach of children.

### Risk of poisoning

### Risk of explosion

- Keep detergents and care products out of the reach of children.
- Items of laundry pretreated with cleaning agents containing solvents, e.g. stain remover / cleaning solvent may lead to an explosion after being loaded into the washing machine. Rinse items of laundry thoroughly by hand beforehand.

### Risk of injury

- The washing machine door can become very hot.
- Be careful when draining hot detergent solution.
- Do not climb onto the washing machine.
- Do not lean on the open washing machine door.
- Do not reach into the drum if it is still rotating.
- Be careful when opening the detergent drawer while the machine is in operation.

## Consumption values

depending on model

Programme	Load	Electricity***	Water***	Programme duration***
Cottons 30 °C*	7 kg	0,55 kWh	60 l	02:36 h
Cottons 40 °C*	7 kg	0,69 kWh	60 l	02:36 h
Cottons 60 °C*	7 kg	1,33 kWh	60 l	02:41 h
Cottons 90 °C	7 kg	2,00 kWh	64 l	02:48 h
Easy-Care 40 °C*	3 kg	0,55 kWh	55 l	01:37 h
Mixed Load 40 °C	3 kg	0,48 kWh	32 l	01:03 h
Delicate/Silk 30 °C	2 kg	0,21 kWh	31 l	00:41 h
/ Wool 30 °C	2 kg	0,19 kWh	39 l	00:40 h

\* Programme setting for testing in accordance with valid standard EN60456.  
Note on comparative tests: For testing the test programmes, wash the specified load using the maximum spin speed.

Programme	Additional function	Load	Annual energy consumption	Annual water consumption
Cottons 40/60 °C	EcoPerfect**	7/3,5 kg	197 kWh	10560 l

\*\* Programme setting for testing and energy labelling in accordance with EU directive 2010/30/EU with cold water (15 °C).

\*\*\* The values deviate from the indicated values depending on water pressure, hardness, and inlet temperature, ambient temperature, type, amount and soiling of the laundry, detergent used, fluctuations in the power supply and selected additional functions.



## Care



- Risk of electric shock. Disconnect the mains plug.
- Risk of explosion. No solvents.



### Before washing for the first time

Do not load any laundry into the machine. Turn on the tap. Add the following to compartment **II**:

- approx. 1 litre water
- detergent (dosage according to the manufacturer's instructions for light soiling and the appropriate degree of water hardness)

Set the programme selector to **Easy-Care 60 °C** and select **Start/Reload**. At the end of the programme, turn the programme selector to **Off**.



### Machine housing, control panel

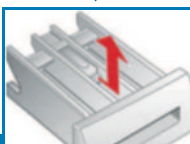
- Wipe with a soft, damp cloth.
- Do not use any abrasive cloths, scourers or cleaning agents (stainless steel cleaners).
- Remove detergent and cleaning agent residue immediately.
- Do not clean with a jet of water.



### Cleaning the detergent drawer ...

... if it contains detergent or fabric softener residues.

1. Pull out, press insert down, remove draw completely.
2. To remove the insert: press the insert upwards from below with your finger.
3. Clean the detergent dispenser tray and insert with water and a brush and dry it.
4. Attach the insert and engage (connect the cylinder to the guide pin).
5. Push in the detergent drawer.



Leave the detergent drawer open so that any residual water can evaporate.



### Drum

Leave the washing machine door open so that the drum can dry out.

Rust stains - use chlorine-free cleaning agent, not steel wool.



### Descaling *Ensure there is no laundry in the machine*

Descale the appliance according to the descaler manufacturer's instructions. This should not be necessary if the correct dosage of detergent is used.



### Emergency release, e.g. in the event of a power cut

The programme continues to run when the power has been restored. However, if the laundry has to be removed, the washing machine door can be opened as follows:



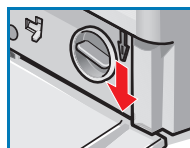
#### Risk of scalding.

*The detergent solution and laundry may be hot. If possible, leave it to cool down.*

*Do not reach into the drum if it is still rotating.*

*Do not open the washing machine door if water can be seen through the glass.*

1. Turn the programme selector to **Off** and disconnect the mains plug.
2. Drain the detergent solution → *page 10*.
3. Pull the emergency release downwards with a tool and release. Washing machine door can then be opened.



## Information on the display panel *depending on model*

<b>F: 16</b>	Close the washing machine door properly; laundry may be caught.
<b>F: 17</b>	Open the tap completely, supply hose kinked or trapped; Clean the filter → <i>page 10</i> , Water pressure too low.
<b>F: 18</b>	Detergent solution pump blocked; Clean the detergent solution pump → <i>page 10</i> . Drainage hose / waste pipe blocked; Clean the drainage hose at the siphon → <i>page 10</i> .
<b>F: 21</b>	Motor fault. Call customer services.
<b>F: 23</b>	Water in the base tub, appliance leaking. Call customer services.

## Maintenance



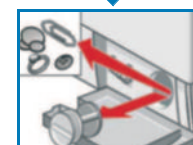
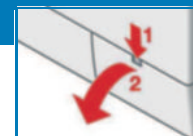
- Risk of scalding. Allow the detergent solution to cool down.
- Turn off the tap.



### Detergent solution pump

Turn the programme selector to **Off** and disconnect the mains plug.

1. Open and remove the service flap.
2. **For models with a drainage hose:** Remove the drainage hose from the retainer and pull it from the housing. Remove the container. Remove the sealing cap, allow the detergent solution to flow out. Replace the sealing cap and place the drainage hose in the retainer.
- 2\* **For models without a drainage hose:** Carefully unscrew the pump cover until the detergent solution begins to flow out. When the service flap is half full, close the pump cover and empty the service flap. Repeat the above steps until all the detergent solution has completely drained out.
3. Carefully unscrew the pump cover (residual water).
4. Clean the interior, pump cover thread and pump housing (the impeller in the detergent solution pump must rotate).
5. Replace the pump cover and screw it tightly.
6. Place the service flap back on and close.



To prevent unused detergent from flowing straight into the drain during the next wash: Pour 1 litre of water into compartment **II** and start the **Drain** programme.



### Drainage hose at the siphon

Turn the programme selector to **Off** and disconnect the mains plug.

1. Loosen the hose clamp, carefully remove the drainage hose (residual water).
2. Clean the drainage hose and siphon connecting piece.
3. Reattach the drainage hose and secure the connection with the hose clamp.



### Filter in the water supply

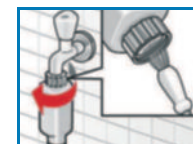


#### Risk of electric shock!

*Do not immerse the HydroSafe safety device in water (contains an electric valve).*

Reduce the water pressure in the supply hose:

1. Turn off the tap.
2. Select any programme (except for **Rinse** // **Spin** // **Drain**).
3. Choose **Start/Reload**. Let the programme run for approximately 40 seconds.
4. Turn the programme selector to **Off**. Disconnect the mains plug.



Clean the filter:

1. Depending on model:  
Disconnect the hose from the tap.  
Clean the filter using a small brush.

**and/or** for Standard and Aqua-Secure models:

1. Remove the hose on the rear of the appliance,  
Remove the filter with pliers and clean.
2. Connect the hose and check for leaks.



# What to do if ...

Water is leaking out.	<ul style="list-style-type: none"> <li>– Attach/replace the drainage hose correctly.</li> <li>– Tighten the screw connection of the supply hose.</li> </ul>
No water supply. Detergent not dispensed.	<ul style="list-style-type: none"> <li>–  <b>Start/Reload</b> not selected?</li> <li>– Tap not turned on?</li> <li>– Filter blocked? Clean the filter → <i>page 10</i>.</li> <li>– Supply hose kinked or trapped?</li> </ul>
Washing machine door cannot be opened.	<ul style="list-style-type: none"> <li>– Safety function active. Programme stopped? → <i>page 4</i>.</li> <li>– Is <b>Rinse Hold</b> (without final spin) selected? → <i>page 3, 4</i>.</li> <li>– Can be opened by emergency release only? → <i>page 9</i>.</li> </ul>
Programme does not start.	<ul style="list-style-type: none"> <li>–  <b>Start/Reload</b> or  <b>Ready in</b> time selected?</li> <li>– Washing machine door closed?</li> <li>– Childproof lock active? Deactivate → <i>page 5</i>.</li> </ul>
Detergent solution is not drained.	<ul style="list-style-type: none"> <li>– Is <b>Rinse Hold</b> (without final spin) selected? → <i>page 3, 4</i>.</li> <li>– Clean the detergent solution pump → <i>page 10</i>.</li> <li>– Clean the waste pipe and/or drainage hose.</li> </ul>
Water not visible in the drum.	<ul style="list-style-type: none"> <li>– Not a fault - water below the visible area.</li> </ul>
Unsatisfactory spin result. Laundry wet/too damp.	<ul style="list-style-type: none"> <li>– Not a fault - the unbalanced-load detection system has cancelled the spin cycle because of uneven distribution of the laundry. Distribute small and large items of laundry evenly inside the drum.</li> <li>–  <b>Reduced Ironing</b> selected? → <i>page 5</i>.</li> <li>– Selected speed too low? → <i>page 5</i>.</li> </ul>
The programme duration changes during the wash cycle.	<ul style="list-style-type: none"> <li>– Not a fault – the programme sequence is optimised for the particular wash process. This may result in changes to the programme duration in the display field.</li> </ul>
Spin cycle performed several times.	<ul style="list-style-type: none"> <li>– Not a fault - unbalanced load detection system adjusts the imbalance.</li> </ul>
Residual water in the compartment for care products.	<ul style="list-style-type: none"> <li>– Not a fault - the action of the care product is not affected.</li> <li>– Clean the insert if necessary → <i>page 9</i>.</li> </ul>
Odour formation in the washing machine.	<ul style="list-style-type: none"> <li>– Run programme  <b>Cottons 90 °C</b> without laundry. Use standard detergent.</li> </ul>
Status display  flashes. Foam may be coming out of the detergent drawer.	<ul style="list-style-type: none"> <li>– Too much detergent used? Mix 1 tablespoon of fabric softener with ½ litre of water and pour into dispenser <b>II</b> (<i>not for outdoor and down-filled textiles!</i>).</li> <li>– Reduce the detergent dosage for the next wash cycle.</li> </ul>
Intense noise formation, vibrations and “wandering” during the spin cycle.	<ul style="list-style-type: none"> <li>– Are the appliance feet fixed? Secure the appliance feet → <i>Installation instructions</i>.</li> <li>– Transportation safety devices removed? Remove the transportation safety devices → <i>Installation instructions</i>.</li> </ul>
Noises during spin and drain cycles.	<ul style="list-style-type: none"> <li>– Clean detergent-solution pump → <i>page 10</i>.</li> </ul>
Displaypanel/indicator lamps do not function during operation.	<ul style="list-style-type: none"> <li>– Power cut?</li> <li>– Fuses triggered? Reset/change the fuse.</li> <li>– If the fault occurs repeatedly, call customer services.</li> </ul>
Programme sequence longer than usual.	<ul style="list-style-type: none"> <li>– Not a fault - unbalanced load detection system adjusts imbalance by repeatedly distributing the laundry.</li> <li>– Not a fault - foam detection system active - adds an additional rinse cycle.</li> </ul>
Detergent residues on the laundry.	<ul style="list-style-type: none"> <li>– Occasionally, phosphate-free detergents contain water-insoluble residues.</li> <li>– Select the  <b>Rinse/Spin</b> cycle or brush out the laundry after washing.</li> </ul>

If you cannot correct a fault yourself (switching on/off) or a repair is required:

- Turn the programme selector to **Off** and remove the mains plug from the socket.
- Turn off the water supply and call customer services → *Installation instructions*.



Washing machine

en Instruction manual