



## Instruction manual for External Motor

Model code: DDMEXT3





GB



The symbol on the product or on its packaging indicates that this product may not be treated as household waste. Instead it shall be handed over to the applicable collection point for the recycling of electrical and electronic equipment. By ensuring this product is disposed of correctly, you will help prevent potential negative consequences for the environment and human health, which could otherwise be caused by inappropriate waste handling of this product. For more detailed information about recycling of this product, please contact your local city office, your household waste disposal service or the shop where you purchased the product. This appliance is marked according to the European directive 2002/96/EC on waste electrical and electronic equipment (WEEE).

**Warnings!**

- The air outlet of the appliance must not be connected to a flue which is used for exhausting other fumes from appliances, such as a central heating, boilers etc..
- Ensure the external exhausting of the fumes, comply with the regulations in force.
- Ventilate the room suitably according to the laws in force when the appliance is working together with gas, oil or coal burning appliances, at the same time.
- The motor of the peripheral exhausting group is powered by the cookerhood placed in the kitchen.
- Before connecting the cooker hood to the mains supply, make sure that the voltage indicated in the rating plate corresponds to the mains voltage in the home.
- Before carrying out any sort of maintenance or cleaning operation, make sure that the appliance is disconnected from the electrical mains.
- Appropriate maintenance ensures good working and good performance in the long run.

**Advice for good performance of the appliance:**

- Use an exhausting pipe with the necessary minimum length.
- A few bends with a maximum 90° bending angle.
- Materials in accordance with the directives.
- Avoid any drastic change in the section (constant diameter: □ 150 mm. advised)
- Read the mounting and operating instructions of the exhausting cooker-hood carefully.
- The manufacturer cannot be held responsible for a decrease of the air flow or for an increase of noise level caused by non-compliance with the instructions above.

**Warning!**

**The the DDMEXT3 suction centrals can be connected to any other products from the same manufacturer if they are equipped with the External Motor version. In case they are connected to products from other suppliers, the SCET-1 central unit can command them.**

**The manufacturer cannot be held responsible for damages caused by incorrect use. No guarantee or indemnity will be due.**

## DDMEXT3 (fig. 9)

**Warning! The remote fitted exhausting group (external motor) is built in class I plate, therefore it needs the earth connection.**

The appliance was designed to exhaust odours and vapours in the best way. The appliance is to be installed on the outside wall of the house and connected to the cookerhood which is in the kitchen (fig. 10) or to the SCET control unit 1.

**Installation:** the mounting of the appliance is to be made by qualified technicians. Using the appropriate drilling jig (fig. 11) drill all the holes marked on it into the external wall, by paying attention not to damage water pipes or power lines. The holes on the wall are to be drilled with a 8 mm. bit. Insert, step by step, the following parts in the holes drilled:

- the corresponding plastic dowels supplied (fig. 11A)
- the two telescopic pipes in the hole of 160 mm.
- the plastic pipe of 40 mm. diameter.

Before leaning the appliance against the wall, insert the supply cord in the plastic pipe. Fix the appliance without the stainless steel external body, which was previously removed from the motor block, by matching the holes of the motor block with the holes on the wall. Tighten with the screws supplied (fig.11B).

**Connection of the pipes:** the appliance is fitted with an air entrance to be connected with the telescopic pipes and an air outlet.

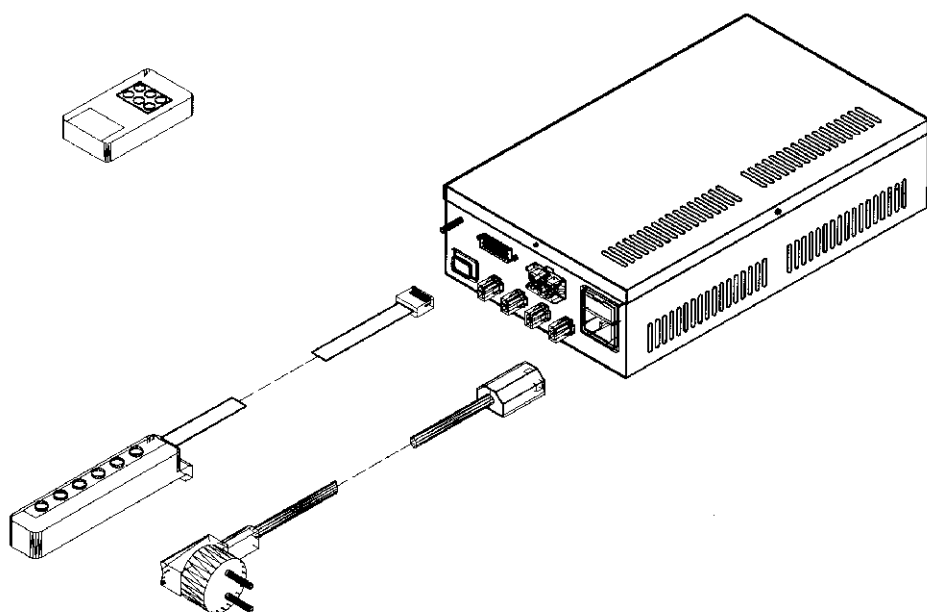
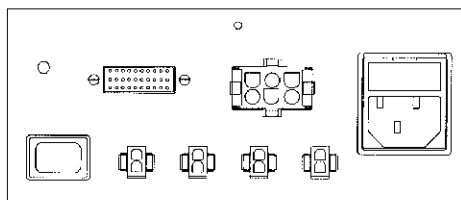
After fixing the appliance on the external wall, connect the two telescopic pipes, which are placed inside the wall, with the cooker-hood through the flexible pipes (fig. 12).

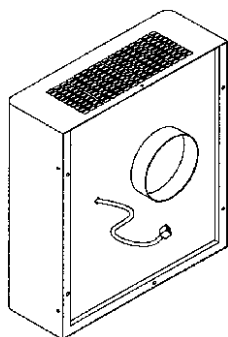
The fixing between the pipes have to be made with appropriate metal clamps (pipes and clamps are supplied by the installer).

**Electrical connection of the hood:** the appliance is equipped with a 7m electrical cable. Make the cable pass through the plastic hose in the wall (see fig. 12E), connect it to the appliance in the kitchen and then connect the ground wire to the screw near the connection by means of nut and washer (see fig. 14). You can otherwise make the electrical connection to the SCET-1 central unit.

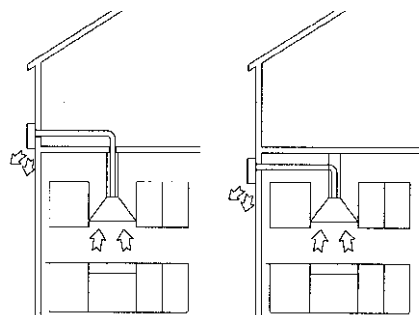
**Installation of the stainless steel external body:** fit the stainless steel body again, by matching the air exhausting grid with the air outlet of the motor block (fig. 13).

# SCET - 1

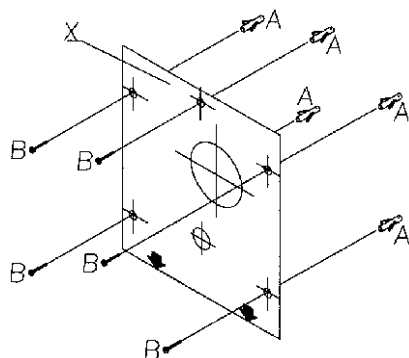




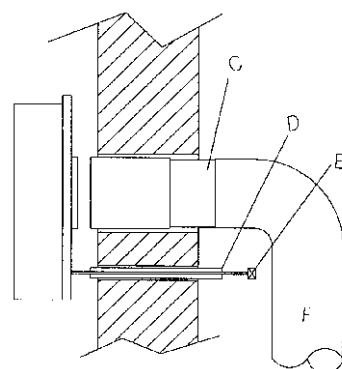
9



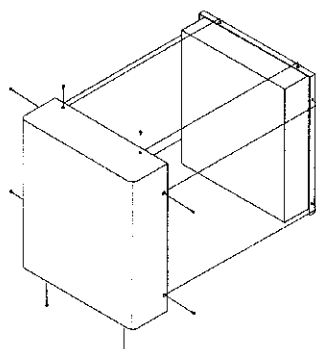
10



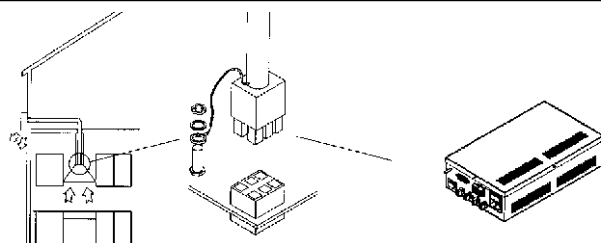
11



12



13



14

