



Instruction manual for fridge freezer

Model code: CAFF40SS CAFF40BK



Contact Caple on 0844 800 3830 or for spare parts www.4caple.co.uk

Congratulations

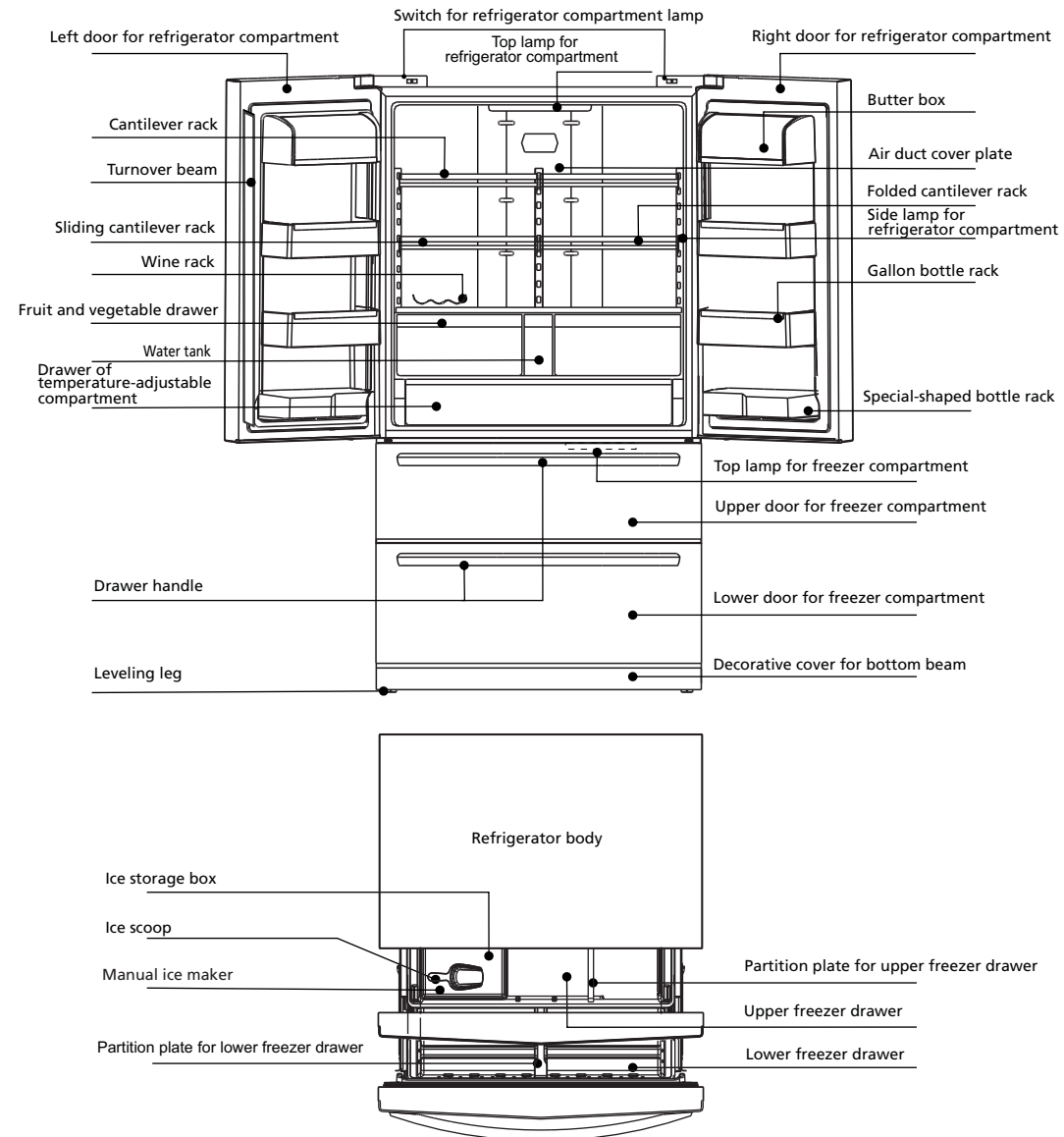
- Thank you for choosing a Caple fridge freezer.
- The refrigerator has outstanding energy efficiency.
- All our household appliances have been examined thoroughly before leaving the factory in order to ensure their stability and sound condition.
- Please contact our customer service department as soon as possible in case of any doubts, in particular, about the connection and installation of the refrigerator.
- For more information and introduction of more products, please visit our website www.caple.co.uk.
- Please read carefully and follow the operation instruction, installation instruction and other relevant information enclosed in this manual.
- Please keep all manuals safe, as you can view them in case of any problems or give them to the new user in the future.

Notes:

- Please pay attention to the safety precautions before use.
- Please keep all files safe after reading for future reference.
- Our products are being improved all the time and they are subject to change without prior notice.

Components and Parts

Some features and parts of your refrigerator may be different to this diagram. The packing list enclosed with your refrigerator will be correct. We apologise for the inconvenience caused.



Before Using Your Refrigerator

Features

- Stainless steel door panel

It is made with anti-fingerprint technology and has an elegant and luxurious appearance.

- Thermostatic freshness preservation technology

The refrigerator compartment is provided with independent air supply system and independent temperature control system. It has constant storage temperature and could preserve the freshness of food.

- Efficient humidity system

The maximum humidity rate is as high as 80%, so it could preserve and prolong the freshness of the stored food.

- DC frequency conversion technology

The refrigerator is capable of automatic adjustment of the cold and efficiency of the frequency-variable compressor according to the surrounding temperature, set temperature, interior temperature, the temperature and amount of the stored food, and it has a quick freeze feature, good performance in freshness preservation, high energy-efficiency and low noise.

- Intelligent defrosting

The refrigerator is capable of intelligent defrosting according to the actual frequency of use and frosting rate.

- Dual system

The food can be stored in either the refrigerator compartment or the freezer compartment to avoid tainting.

- Key parts and components

The compressor is Embraco frequency-variable compressor, which features are high efficiency, energy saving and low noise.

- Temperature-adjustable compartment

A temperature-adjustable compartment is set below the refrigerator compartment. It can be set at different temperatures according to the requirements of the food stored here.

- Ice maker

The freezer compartment is provided with an automatic ice maker, whose water supply box is set in the refrigerator compartment. It is provided with water filter blocks, which are capable of sterilization and removal of impurities. As a result, clean ice is made.

- Artificial intelligence

The refrigerator is capable of being adjusted automatically to the optimal Performance according to the interior temperature and surrounding temperature without the need of manual adjustment.

- Large and luxurious design

The refrigerator is designed with large capacity for both the refrigerator compartment and freezer compartment. The refrigerator compartment has adjustable cantilever shelves and has a big fruit and vegetable drawer.

--Free of Freon or frost, air-cooling refrigeration system, capable of cryogenic treatment and quick freezing

--Automatic display of faults

--Open door alarm and large-screen LCD

--Four-door design, for easy access.

--Luxurious LED lamps on three sides in the refrigerator compartment for excellent visibility

Correct Use for Your Refrigerator

Warnings

- Don't use mechanical equipment or other methods to accelerate the defrosting process except the means recommended by the manufacturer.

- Don't use any electrical appliances in the food storage compartments except the model recommended by the manufacturer.

- The R600a refrigerant and cyclopentane foaming material used in the refrigerator are inflammable. All waste and discarded refrigerators shall be placed away from naked fire and they are not allowed to burn.

Unpacking your new fridge freezer

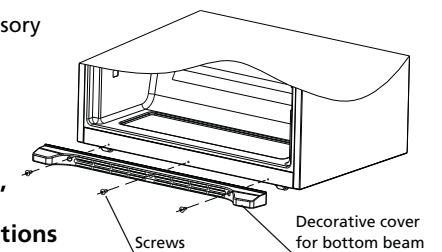
- Remove all packaging material before using the new refrigerator. This includes the foam base and all adhesive tape holding the refrigerator accessories inside and outside.

- Clean both the inside and outside of the refrigerator with wet cloth (a little detergent could be added into the warm water to wash the cloth and then wipe it again with the clean water);

- Prepare an independent two-pole socket with grounding contact for the refrigerator and it should not share a multi-purpose socket with other electrical appliances; ENSURE this product is earthed. The grounding pole of the socket must be provided with a reliable grounding wire.

- Open the refrigerator body and take out the accessory (decorative cover for bottom beam) and the three screws from the instruction packaging bag; then install them into the bottom beam as shown by the schematic diagram on the right.

Note: The decorative cover for bottom beam is used as for decorative purposes only, so you can choose not to install it. It will not affect the refrigerator's performance or conditions whether you install it or not.



Transport and Placing of Your Refrigerator

Transport

- Keep upright and avoid squeezing or vibration during transport. Avoid a slant angle over 45 degree during handling.
- Avoid the door or top cap from being under excessive stress when moving; otherwise, it may become deformed.

Placing

- Place your refrigerator in a well-ventilated place and keep it from heat source and direct sunlight. Don't place it in any humid or wet place so as to avoid rust and weakening of insulation effect.
- There must be a space not less than 30cm from the top of your refrigerator and not less than 10cm from both sides or the back of the refrigerator to the adjacent walls respectively. This is required to allow the door to open and close fully, and also for heat emission.
- The refrigerator should be placed on a flat and firm ground (if not flat, you can use the leveling legs for adjustment).

Keep Your Refrigerator Standing

- Don't connect your refrigerator to the power supply immediately after it is placed vertically. You should keep it standing for at least 12 hours before switching it on in order to ensure it runs well.

Note: Make sure the power wire is not trapped or damaged by the refrigerator or other objects so as to avoid accidents arising from power wire faults. Please check the voltage scope of your refrigerator against the actual power supply before switching it on.

Correct Use for Your Refrigerator

Start to Use

We suggest you get a good knowledge of all the safety precautions and make sure that your refrigerator has been placed properly in its final position before using.

1. Unpacking

Please install the decorative cover on the bottom beam of your refrigerator after unpacking and adjust the front leveling legs to level your refrigerator.

2. Connecting Your Refrigerator to the Power Supply

Your refrigerator will enter the ex-factory default state after connecting to the power supply and it will display a target temperature for the refrigerator compartment and freezer compartment.

3. Modes of Your Refrigerator

You can set your refrigerator in either of the following two ways:

- (1) Smart mode: we suggest you select this mode if you have no special requirements. Your refrigerator will work automatically after you chose this mode.
- (2) Manual mode: You can set the temperature by pressing the temperature adjustment key.

4. Adding Food To Your Refrigerator

After the appliance has been switched on for a period of time it should have cooled to the set temperature (about 3 hours in summer). Once this has been done you can add the food.

Tips: The interior temperature may require a certain period of time to reach balance if the setting temperature is changed or other food is put into the refrigerator. Such a period of time depends on the change to the set temperature, the surrounding temperature, opening frequency, the amount of the stored food and etc.

Refrigerator compartment

Though the temperature-adjustment device you can keep most of the refrigerator compartment at an average temperature around 2~8, it fails to preserve the freshness of food for long. As a result, the refrigerator compartment can be used only for short-term storage.

● Use of turnover beam

Please keep strictly to the warnings on the label of the turnover beam. It is a normal phenomenon that the surface of the turnover beam is hot. Dews on the surface are also normal in summer or when the surrounding environment is wet. What you need to do is to wipe them away with a clean cloth.

● Use of water tank

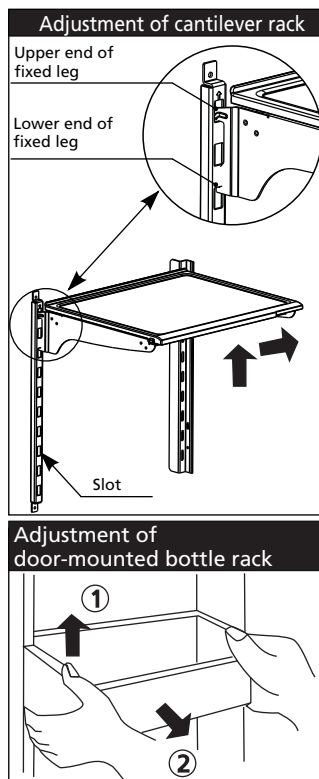
Add pure water or mineral water into the tank other than tap water (don't put juice, milk or other drinks into the water tank; otherwise, the pipe may be blocked). Please fill water as soon as possible if the water level in the tank is low. Generally, the water filter blocks in the tank should be changed annually, as the case may be.

● Adjustment of cantilever rack

The cantilever rack could be adjusted to the proper height as required by food. Please adjust the cantilever rack by following the arrows as shown in the diagram. Raise it upward first and then take it out by tilting it upward. During installation, put the upper end of the fixed leg into one of the upper slots on the supporting iron first and then put the lower end of the fixed leg into the third slot on the lower part of the supporting iron.

● Height adjustment and cleaning of door-mounted bottle rack

Raise the bottle rack in direction 1. hold it with both hands and take it out in direction 2. After cleaning, you can install the rack in the reverse order and you can also adjust the height of the rack.



Correct Use for Your Refrigerator

● Food suggested to store in refrigerator compartment

- (1) Cooked food, cans, milk, etc.
- (2) Snack food, food subject to tainting, dairy products
- (3) Cooked cold meat, sausage
- (4) Fruit, vegetables
- (5) Eggs, butter, cheese
- (6) Cans, seasoning
- (7) Drinks, other bottled food

Freezer compartment

The temperature in the freezer compartment is very low so it preserves the freshness of food for long periods of time.. Foods that are to be stored for a long time could be put in this compartment but not exceed the storage period specified on the packaging of each type of food.

NOTE: You can take out the drawers of the freezer compartment to increase its capacity and store more food.

● Food suggested to store in freezer compartment

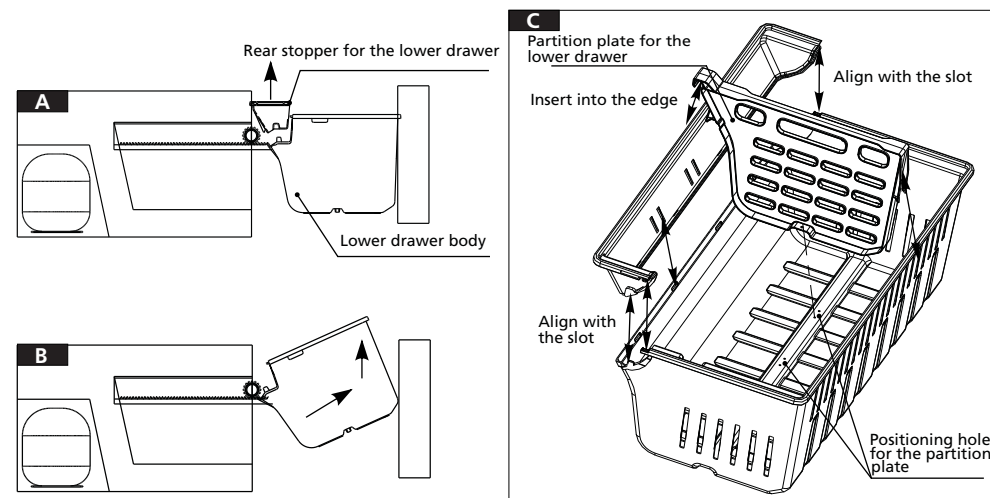
- (1) The upper drawer of the freezer could be used to store fish, meat, ice-cream and etc.
- (2) Japanese-style ice maker is used to make ice
- (3) Ice storage box is used to store the ice
- (4) The lower drawer of the freezer is used to store fish, meat and packaged poultry meat.

NOTE: Don't touch the freezer tray directly with hands to avoid injury caused by the very low temperature..

Removing and installing the lower freezer drawer

- (1) Pull out the lower freezer drawer first.
- (2) Take out the two fixed screws from the partition plate of the lower freezer drawer with screw driver and then take off the partition plate.
- (3) Take off the rear stopper for the lower drawer as shown by Fig. A.
- (4) Take out the lower drawer body with force as directed by the arrows in Fig. B.
- (5) The installation of the lower drawer body is conducted in the reverse order. You should install the lower drawer body first and then install the rear stopper for the lower drawer as shown in Fig. C. Finally, both sides of the drawer shall be connected to the position shown by the arrows respectively.
- (6) The partition plate is installed into the corresponding slots and then is fixed with screws. The position of the partition plate for the lower drawer could be adjusted according to your preference.

Advice: Don't remove the lower freezer drawer if not necessary.

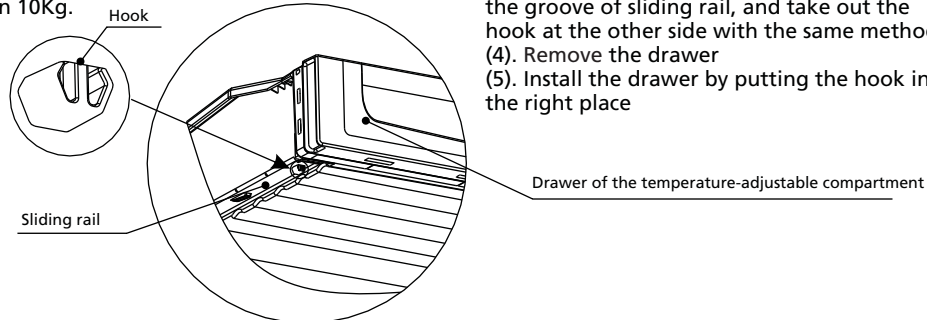


Correct Use for Your Refrigerator

Temperature-adjustable compartment

It can be set to different temperatures based on the needs of the food stored.

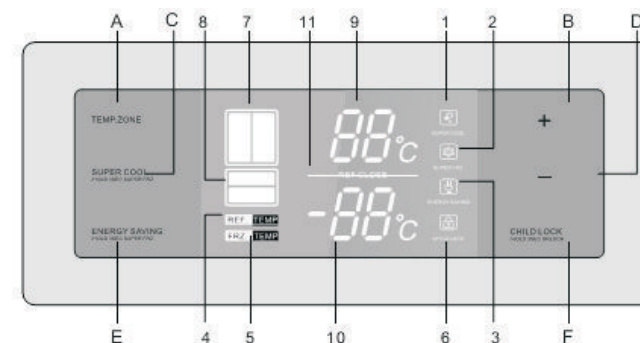
- Set to Fruit and Vegetable mode for food that can't be frozen.
- Set to Zero Degree Fresh-keeping Mode for perishable food that could be frozen and stored for a short period.
- The drawer for the temperature-adjustable compartment has a maximum load no greater than 10Kg.



Remove and re-install the temperature-adjustable compartment

- (1). Pull out the drawer of the temperature-adjustable compartment:
- (2). Find the hook at the left and right sides at the drawer bottom of the temperature-adjustable compartment (shown in the Fig. below).
- (3). Hold the hook at two sides with re-install nose pliers or tweezers and push it up and out of the groove of sliding rail, and take out the hook at the other side with the same method.
- (4). Remove the drawer
- (5). Install the drawer by putting the hook into the right place

Introduction of Your Refrigerator's Functions



1. Operation keys

- A. Temp zone B. + C. Quick cooling mode
D. - E. Energy saving mode F. child lock

2. Display contents

1. Quick cooling icon 2. Quick-freeze icon 3. Energy-saving icon
4. Refrigerator temperature setting icon 5. Freezer temperature setting icon 6. Lock icon 7. Refrigerator icon 8. Freezer icon 9. Refrigerator temperature 10. Freezer temperature 11. Refrigerator turn-off icon

3. Initial power-on

4, 6, 8, 9 and 10 turn on at initial power-up. 1, 2, 3, 5, and 11 do not turn on.

4. Lock and unlock

In the unlock state (icon 6 does not turn on), push the key F to enter the lock state and icon 6 turns on. In the lock state, push and hold the key F for 3 seconds, icon 6 turns off and the lock is cancelled. In the unlock state, in case of no other input using any buttons after 25 seconds, it enters the lock state automatically.

The following functions operate in the unlock state.

1. Energy-saving mode

Entry: push the key E, the icon 3 turns on. Choose the energy-saving mode to operate the refrigerator, and the mode operated before will be cancelled.
Exit: ① enter other modes ② push the key B or D to the set temperature ③ push the key E. When each condition mentioned above occurs, the refrigerator exits the energy-saving mode.

2. Quick-cooling mode

Entry: push the key C, the icon 1 turns on. Choose the quick cooling mode to operate the refrigerator. If the refrigerator is operating in the energy saving mode, the energy saving mode exits.
Exit: ① enter the energy saving mode ② push the key B or D to the set temperature ③ push the key C. When each condition mentioned above occurs, the refrigerator exits the quick cooling mode.

Introduction of Your Refrigerator's Functions

1.Quick-freeze mode

Entry: push and hold the key C for 3 seconds, the icon 2 turns on. Choose the quick-freeze mode to operate the freezer. If the freezer is operating in the energy-saving mode, the energy-saving mode exits.

Exit: ① enter the energy-saving mode ② push the key B or D ③ push and hold the key C for 3 seconds. When each condition mentioned above occurs, the quick-freeze mode exits.

2.Refrigerator turn-off

Push and hold the key E for 3 seconds, the refrigerator turns off. The icon 7 turns off and icon 11 turns on. The icon 9 shows “-- --”. Push and hold the key E once again for 3 seconds, the refrigerator turns on and the icon 7 turns on. The icon 11 turns off and the icon 9 displays normally.

3.Refrigerator temperature setting

Push the key A until the display changes to refrigerator temperature setting. The icon 4 turns on. Push the key B or D once, and the refrigerator setting temperature changes 1°C according to the regulation of (8)(2)(8).

4.Freezer temperature setting

Push the key A until the display changes to the freezer temperature setting. The icon turns on. Push the key B or D once, and the freezer setting temperature changes 1°C according to the regulation of (-15) (-24) (-15)

5.Interface display

When the refrigerator door is opened or the control panel is operated, the LCD display light will be turned on. If there is no operation on the the control panel or the refrigerator door has been closed for more than 30 seconds, the LCD display light will be turned off.

Temperature-adjustable compartment's control panel

Open the refrigerator compartment's door and you might find indicators as shown in to the right..

1. Indicators

(1). Zero degree Keep Fresh mode (2). Cold drinks mode
(3). Fruit and vegetable mode (4). Mode selection

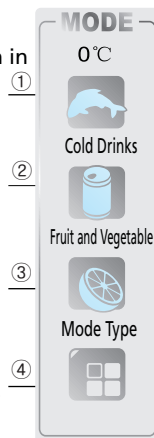
2. Instructions

Push key (4) and indicator (1) is On to enter into the zero-degree Keep Fresh mode.

Push key (4) and indicator (2) is On to enter into the cold drinks mode.

Push key (4) and indicator (3) is On to enter into the fruit and vegetable mode.

The temperature-adjustable compartment could choose one of above modes. Three modes could be adjusted in the cycle of “zero-degree Keep Fresh mode---cold drinks---fruit and vegetables” to store and keep fresh different types of food.



Attention

Attentions

- The refrigerator works with AC 220-240V/50Hz power supply. If the voltage fluctuates in a wide range(out of the 187~242V range), the refrigerator might fail to start, the main control panel or compressor might break down, or the compressor might work with abnormal noises. You must use an automatic voltage stabilizer above 750W in such situations. The refrigerator has a three-phase (earthing) power cable plug to be plugged into the standard three-phase (earthing) socket. Never cut off or remove the third pin (earthing) of the power cable. After the refrigerator is installed in the correct place,the socket should be in the accessible range for ease of plugging/unplugging. The plug should contact securely with the socket, otherwise, it might cause fire.

- Never pull out the plug by pulling the power cable. Always hold the plug and pull it out from the socket. Don't trap the power cable under the refrigerator or feet. When the refrigerator is moved away from the wall, never press or damage the power cable. When the power cable is damaged or the plug is worn, do not use it anymore. When the power cable is worn or damaged, you must contact the Caple service centre to arrange a repair. .

- When coal gas or other inflammable gases are leaked, close the valve which is leaking gases. Open the door and windows. Don't pull out or insert the plug of the refrigerator or other electric appliances.

- Don't put inflammable, explosive, volatile or strongly corrosive substances into the refrigerator to avoid causing damage or starting fire or other accidents.

- Don't use inflammable solvent near the refrigerator to avoid fire.

- It is advisable that you don't put the power socket, voltage stabilizer, microwave oven and other electric appliances on top of refrigerator to ensure safety. Don't use any electric appliances inside the refrigerator (except for the model recommended) to avoid electromagnetic interference or other accidents.

- Please keep children from entering or climbing into the refrigerator to avoid the children children becoming locked inside and hurting themselves if the refrigerator falls.

- When the refrigerator starts to work, don't touch the cold surface of the freezer compartment, especially with wet hands, to avoid hurting yourself.

- The gap between doors and between the door and refrigerator body is small. Don't put your hands into these areas to avoid trapping your fingers. When you open the refrigerator's door, don't let children approach.

- Don't sprinkle water onto or rinse the refrigerator with water. Don't put the refrigerator in wet places so as not to effect the electric insulation property of the refrigerator.

- Don't disassemble or reform the refrigerator yourself. Never damage the refrigeration pipeline. Please get the refrigerator repaired by official Caple service agents. .

- Don't put fluid substances in bottles or sealed containers into the freezer, for example bottled beer or drinks to avoid them cracking or exploding during freezing possibly causing other damage.

- When power outage or cleaning, disconnect the appliance from the power supply. Do not reconnect and turn the fridge freezer on until at least 5 minutes have elapsed to prevent damage to the compressor.

- When the refrigerator has reached the end of its life, please remove the doors and and shelves, keeping them in a save place. This is to prevent children from becoming trapped inside the appliance.

- This product is a household refrigerator and is only suitable for storage of food according to state standards. It can't be used for other purposes, like storage of blood, drugs, biological products etc. The warranty is void if the product is used in a commercial installation.

Repair and Maintenance of Your Refrigerator

Repair and maintenance

Cleaning

Regularly clean dust from the back of refrigerator and ground.

Clean regularly the space inside the refrigerator to avoid any unpleasant smells.

Before cleaning, pull out the plug and use soft towels and neutral detergent cleaning it finally with clear water. It is recommended to clean once every 6 months.

Never use the following substances to clean inside the refrigerator:

- Alkaline or weak alkaline detergent (it might cause cracking of the liner and plastic parts)
- Soap powder, benzoline, thinner, alcohol etc (might damage plastic parts)
- Wipe off edible oil or flavoring immediately (may also cause cracking of the plastic parts)

Replacing the lights

- To be replaced by professionals

Refrigerator compartment

● Keep fresh with optical wave-use the optical-wave lamp to maintain the photosynthesis of fruit and vegetables, prolonging the growth period and helping to keep it fresh

- Degrading the pesticide - use the UV-LED light to degrade pesticide residue on the fruit and vegetables, ALWAYS clean with water before eating.

Power off

When the refrigerator isn't used for a long period of time:

- Disconnect the plug from the power supply to avoid the power cable becoming old and degrading, possibly causing electric shock or fire.
- Clean the inside and fully dry the inside refrigerator
- Open the door for a period and fully dry the inside close the door leaving a gap to avoid unpleasant odours. .

Power outage

Reduce the number of times the door is opened during the power outage, don't put fresh food inside the refrigerator until the power is back on..

Disposal

When you discard of an unused refrigerator, remove the door seal to avoid locking to avoid children becoming trapped inside inside the refrigerator.

Simple steps to identify and solve problems

Please read the following section carefully before requesting a repair..

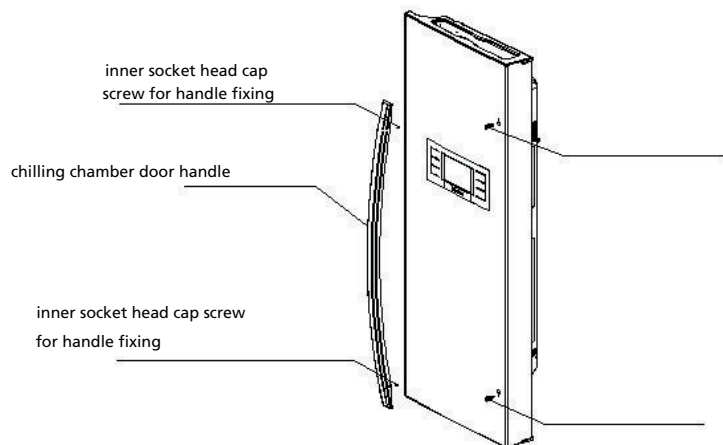
Problem	Possible reasons, items to check
The refrigerator doesn't work	<ul style="list-style-type: none">●Is the product switched on? Has it been connected to the power supply.●Is the voltage correct.
Food is not freezing correctly	<ul style="list-style-type: none">●Is the temperature is set too high? (reduce the temperature as required).●Is too much food stored?●Has hot food been added?●Has the door been opened and closed too frequently?●Is there a heat source around the refrigerator?●Is the door properly closed?
Loud noises	<ul style="list-style-type: none">●Has the product been installed on a level ground?●Are the fridge freezer accessories installed in the correct position.
Food is frozen inside the refrigerator compartment.	<ul style="list-style-type: none">●Has the food been put near the air outlet?
The refrigerator has a unpleasant smell	<ul style="list-style-type: none">●Food with strong smells should be well wrapped.●Check whether the food has gone off.●Clean inside the refrigerator

If the situation doesn't improve after you have checked all above items, please contact the Caple service department.. If power cables are damaged, please ensure it is replaced by a authorised Caple service agent.

Normal phenomena not regarded as malfunctioning

- The refrigerant inside the capillary tubes of the refrigerator flow in high speed and might have a few amount of bubbles. Hence, irregular noises might appear at the outlet.
- When the air humidity is excessively high, moisture or water droplets might appear around the refrigerator's door. This is normal and it just needs to be wiped off.

Installing the door handles



Installation process for the door handles

Difference between the freezer and refrigeration handle: lie them flat, the one with higher chordal height is the refrigeration handle



Freezer door handle



Refrigeration handle

Erection instructions for the freezer door handle:

1. Firstly, take the handle set bolts out from the refrigerator, use cross head screwdriver to tighten on to the door. Fix it tight with all the screw thread twisted through the hole, as shown in the figure;
2. After the first step is completed, take the Freezer storage door handle out from the box, place it as per the direction shown in the figure (Note: i.e. the direction which both screw holes on the handle are close to the edge), and hang the handle above the set bolt;
3. Use the small hexagon spanner supplied in the box to set the handle fixing socket head cap screws into both the small screwed holes on the handle. After they are screwed down, gently shake the handle, so as to confirm that the handle is well fixed.

Installation instructions of the refrigeration door handle:

The installation steps of the fridge door handle is same as that of the cold storage door handle. Please note that: during the installation of the handle, the direction of tapping hole is downward (to the ground).

Energy saving tips and notices

Energy Saving Tips

- The appliance should be located in the coolest area of the room, away from heat producing appliances or heating ducts, and out of the direct sunlight.
- Let hot foods cool to room temperature before placing in the appliance. Overloading the appliance forces the compressor to run longer. Foods that freeze too slowly may lose quality, or spoil.
- Be sure to wrap foods properly, and wipe containers dry before placing them in the appliance. This cuts down on frost build-up inside the appliance.
- The storage areas should not be lined with aluminum foil, wax paper, or paper toweling. Liners interfere with cold air circulation, making the appliance less efficient.
- Organize and label food to reduce the number of times the doors are opened and extended searches. Remove as many items as needed at one time, and close the door as soon as possible.

This appliance is not intended for use by persons (including children) with reduced physical, sensory or mental capabilities, or lack of experience and knowledge, unless they have been given supervision or instruction concerning the use of the appliance by a person responsible for their safety.

Children should be supervised to ensure that they do not play with the appliance.

If the supply cord is damaged, it must be replaced by the manufacturer, its service agent or similarly qualified persons in order to avoid a hazard.

- WARNING: Keep ventilation openings, in the appliance enclosure or in the built-in structure, clear of obstruction.
 - WARNING: Do not use mechanical devices or other means to accelerate the defrosting process, other than those recommended by the manufacturer.
 - WARNING: Do not damage the refrigerant circuit.
 - WARNING: Do not use electrical appliances inside the food storage compartments of the appliance, unless they are of the type recommended by the manufacturer.
 - Do not store explosive substances such as aerosol cans with a flammable propellant in this appliance.
- This appliance is intended to be used in household and similar applications such as
- staff kitchen areas in shops, offices and other working environments;
 - farm houses and by clients in hotels, motels and other residential type environments;
 - bed and breakfast type environments;
 - catering and similar non-retail applications.