

60cm Integrated Extractor

**HJA2230
HJA2240**

**Installation & Operating
Instructions**

LAMONA

Exclusive to Howdens Joinery Co.

• **Contents**

2

Environmental note.	2
IMPORTANT SAFETY INFORMATION.	3 - 4
Know Your Extractor.	5 - 6
Specifications.	5
Operating your extractor.	6
Control panel.	6
Care and Cleaning.	7 - 8
General cleaning.	7
The grease filter.	7
Fitting the carbon filter.	7
Changing a light bulb.	8
Installation.	9 - 14
Before beginning installation.	9
Ducted out or recirculation?	10
Mounting the extractor.	11
Decor door installation.	12
Door weight adjustment	13
Fitting the bottom trim	13
Completing the installation	13
Electrical connection	14
Something Wrong with your Extractor?	15
Contact details	Rear cover

Environmental Note:

Before discarding an old appliance, switch off and disconnect it from the power supply. Cut off and render any plug useless. Cut the cable off directly behind the appliance to prevent misuse. This should be undertaken by a competent person.

• ***Important Safety Information***

3

Your safety is of the utmost importance; please make sure that you read this instruction booklet before attempting to install or use the appliance.

IMPORTANT: Any installation work must be carried out by a qualified electrician or competent person.

- The hood must be installed in accordance with the installation instructions and all measurements followed.
- If the cooker hood is installed for use above a gas appliance then the provision for ventilation must be in accordance with the Gas Safety Codes of Practice BS.6172, BS.5440 & BS.6891 (Natural Gas) and BS.5482 (LP Gas) 1994, the Gas Safety (Installation & Use) Regulations, the Building Regulations issued by the Department of the Environment, the Building Standards (Scotland) (Consolidated) Regulations issued by the Scottish Development Department.
- It is dangerous to alter the specifications or to modify this product; do not tamper with it or attempt to modify the appliance in any way.
- When installing the hood, the following distances must be observed between the top of the worktop and the bottom of the cooker hood:

Recommended:	750 mm
Minimum:	700 mm

- When installed between adjoining wall cabinets, the cabinets must not overhang the hob.
- The edges of the cooker hood may be sharp □ handle your appliance with care, especially during installation and cleaning.
- If the room where the cooker hood is to be used contains a fuel burning appliance such as a central heating boiler then its flue must be of the sealed or balanced flue type.
- If other types of flue or appliances are fitted, ensure that there is an adequate supply of air in the room.
- When the hood is being used in its ducted-out mode, ensure that the ducting is fire retardant and that there are no bends sharper than 90 degrees as this will reduce the efficiency of the hood.

• ***Important Safety Information***

4

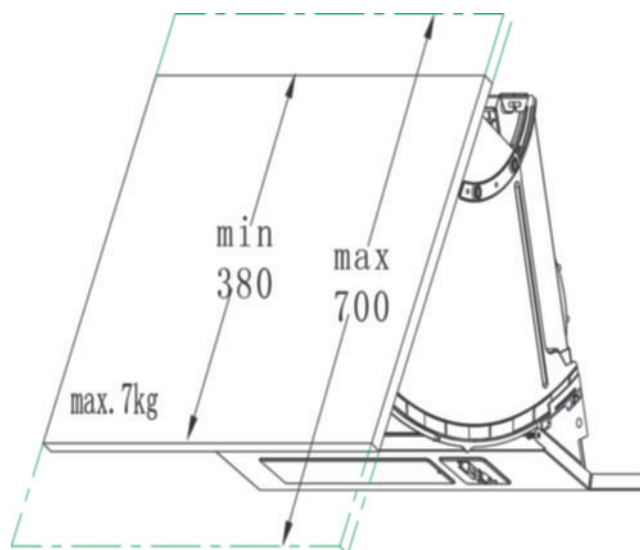
- Keep young children from using, playing with or tampering with the cooker hood. Older children and infirm persons should be supervised if they are using the cooker hood.
- Your cooker hood is for domestic use only.
- Please dispose of the packing material carefully; children are especially vulnerable to it.
- Never leave frying pans unattended during use as overheated fats and oils might catch fire.
- The cooker hood should not be exposed to a direct heat source from the cooking device underneath it, i.e. a naked flame from a gas burner or heat from electric hotplates without a pan on them.
- Never flambé cook under this cooker hood.
- Always put lids on pots and pans when cooking.
- The manufacturer refuses to accept any responsibility for damages arising from a failure to observe the safety advice contained in this instruction booklet.
- Remember that when in ducted-out mode, your cooker hood is removing air from your room; ensure that proper ventilation has been provided.
- **Warning - Always ensure that the cooker hood has been disconnected from the power supply before carrying out any work on the hood, including replacing light bulbs.**
- Do not connect the ducting system of this appliance to any existing ventilation system which is being used for any other purpose.
- Do not install above a cooker with a high level grill.
- The light on this appliance should only be used during operation of the cooker hood. It should not be left on permanently and used as a room lighting source.
- Do not attempt to use the cooker hood if it is damaged in any way. Never attempt to use it without the grease filters fitted or if the filters are excessively greasy!

• *Know Your Extractor*

5

Dimensions:

Extractor width: 600mm
Decor door height: 385 - 700 mm
Decor door weight: 7kg max.



Features:

- Slider control operation.
- Door position extractor control.
- 3 speed extraction.
- 1 x 40W light.
- Ducted-out or recirculation modes.
- Grease filter.
- Carbon filter HJA2907 (**optional for recirculation mode only**)

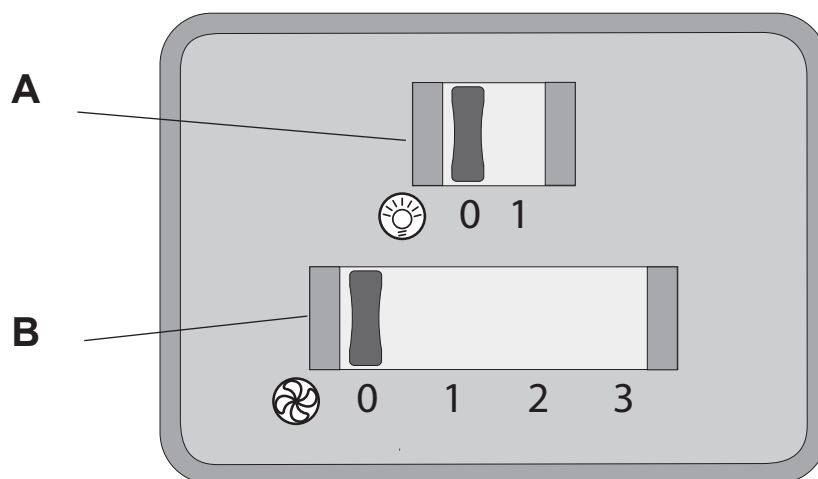
Specifications:

	HJA2230	HJA2240
• Max. Extraction capacity:	220 m ³ /hr	399 m ³ /hr
• Electrical Supply:	220-240V, 50Hz	220-240V, 50Hz
• Max. Appliance Input Power:	140W	240W
• Motor Input Power:	100W	200W
• Fuse Rating:	3A	3A
• Lamp type:	1 X 40W E14	1 X 40W E14

• *Operating Your Extractor*

6

Control Panel:



Slider A: Operates the light
0 is the off position.
1 is the on position.

Slider B: Controls the motor speed.
0 is the off position.
1 is the lowest fan speed.
2 is the medium fan speed
3 is the highest fan speed.

Door Operation

The extractor can be operated by leaving the motor slider on setting 1, 2 or 3 and opening / closing the extractor door. The fan motor will switch off when the door is closed and will resume at the last speed set when the door is pulled open. The same applies to the light, if the slider is left on position 1.

IMPORTANT:

Ideally you should turn on your hood ten minutes before you start to cook, or at the very least when you begin cooking. you should also run your hood for ten minutes after you have finished cooking.

• *Care and Cleaning*

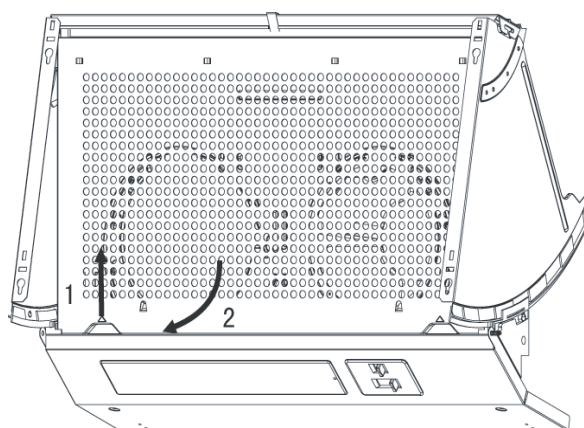
7

IMPORTANT: BEFORE CLEANING, ALWAYS ENSURE THAT YOU HAVE SWITCHED YOUR COOKER HOOD OFF AT THE MAINS SWITCH.

- Clean the external parts of your cooker hood with mild liquid detergent and a damp cloth.
- Never use abrasive powder, corrosive solvents or brushes.
- Never insert pointed objects into the motor's protective grid.
- If you are using the appliance in recirculation mode, then be sure to replace the carbon filter at the recommended interval (see **The Carbon Filter** below).

The Grease Filter

- Open the extractor door.
- Slide the grease filter upwards slightly then outward at the bottom.
- The grease filter is retained in place with a metal spring clip at the top of the extractor and two plastic lugs at the bottom.
- Your cooker hood includes a grease filter which helps to stop grease particles to protect your kitchen & furniture from greasy residues.
- The grease filter may become a fire risk if it becomes saturated with a greasy residue.
- To prevent a fire hazard, the filters should be cleaned regularly. Depending on use, this should be done every 10-15 days or at least once a month, using hot water and normal washing-up detergent.
- **DO NOT WASH THE GREASE FILTER IN A DISHWASHER.**

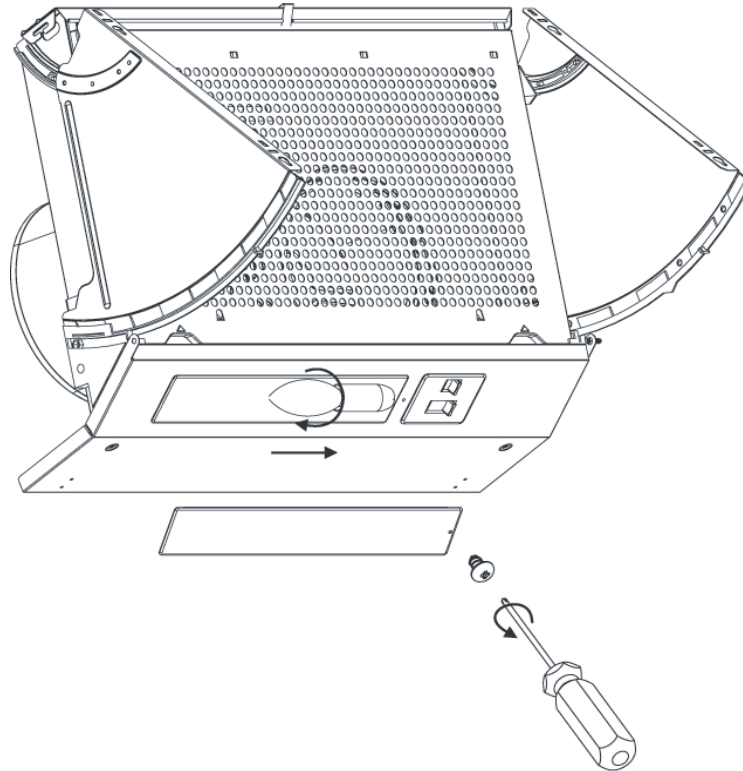


The Carbon Filter

- Grease filters have a limited life and should be replaced every 6 months depending on use.
- A build up of grease could cause a fire hazard.
- Remove the grease filter as described above.
- Remove the carbon filter fitted to each motor housing and replace with one (part no. HJA2906).
- Refit the grease filter.

Changing light bulb

IMPORTANT: Before attempting to change a light bulb, you must ensure that you have disconnected the cooker hood from your mains supply.



- Use a screwdriver to remove the screw securing the cover on the underneath of the cooker hood (as shown in the line drawing above).
- Prior to touching the light bulb ensure that it has cooled down.
- Unscrew the light bulb that needs to be replaced and insert a new E14 40W (max) olive shaped bulb.
- If the light still does not work, make sure that the bulb is correctly fitted into their housings before you call for technical assistance.
- Re-fit the cover and secure it in place using a screwdriver.

We recommend that at least two people install this hood.

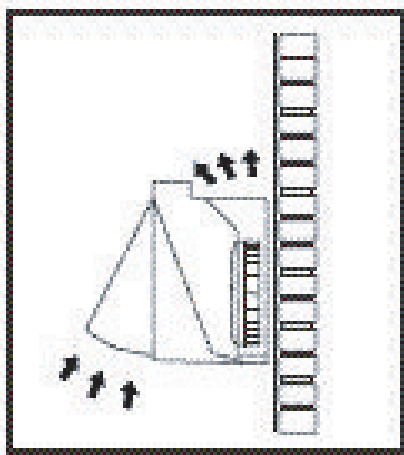
YOUR COOKER HOOD SHOULD ONLY BE CONNECTED TO YOUR MAINS SUPPLY AFTER COMPLETION OF THE INSTALLATION PROCESS

Before beginning the installation

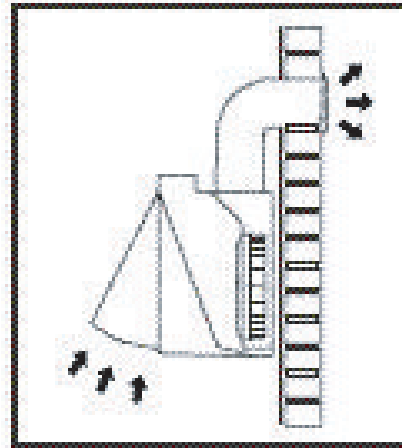
- Check that the product purchased is of a suitable size for the chosen installation area. In addition check that there is an electrical socket available that will be accessible once the hood is mounted. If the product is going to be used in extraction mode, there should also be space to connect a ducting hose to the outside.
- If possible, disconnect and move freestanding or slot-in cookers from their position, to provide easier access to the rear wall and ceiling. If this is not possible, then a thick, protective covering should be placed over the worktop, hob top or cooker. This will help to protect these surfaces from damage and debris.
- Select a flat surface for assembling the cooker hood and cover the surface with a protective covering.
- ***IMPORTANT: Please refer to the information on page 3 regarding the minimum height required between the hob top and the underneath of the cooker hood.***
- The extractor is designed to be installed between two wall units spaced exactly 600 mm apart at an appropriate height above the hob unit.

Ducted out or Recirculating ?

In ducted-out mode, the stale air will be taken out of the room via external ducting. In recirculation mode, stale air is taken via the grease filter, and passed through a charcoal filter to remove odours.



Recirculating



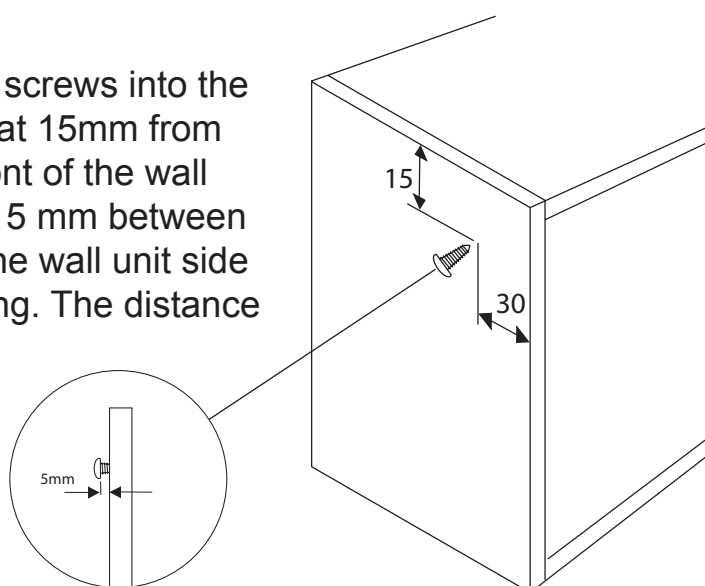
Ducted-out

For optimum performance, we recommend that the cooker hood is connected to external ducting. If the appliance is to be ducted out:

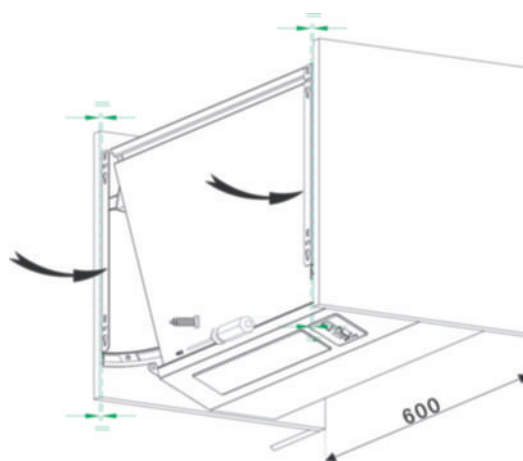
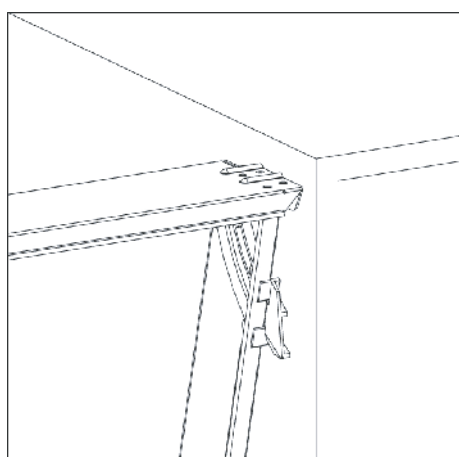
- Mark a position that is suitable and will be accessible once the cooker hood is installed, cut out a circle measuring 130 mm in diameter. This discharge outlet should be suitable for cooking vapours. It should have a cross section of at least 150 cm²
- Fit a suitable ducting terminal (not supplied) to the wall and connect a 125 mm ducting hose (not supplied) to the terminal.
- Connect the other end of the ducting hose to the top of the cooker hood.
- The maximum distance between the cooker hood and your discharge outlet should be 3 metres, with one 90 degree bend. For each additional 90 degree bend, the maximum distance is reduced by a metre.

Mounting the Extractor

- Mark, drill and fit the top fixing screws into the adjacent wall unit side panels at 15mm from the top and 30mm from the front of the wall unit as shown. Leave a gap of 5 mm between the heads of the screws and the wall unit side to allow the extractor to be hung. The distance between the screw and the cooking surface should not be less than 1040mm.



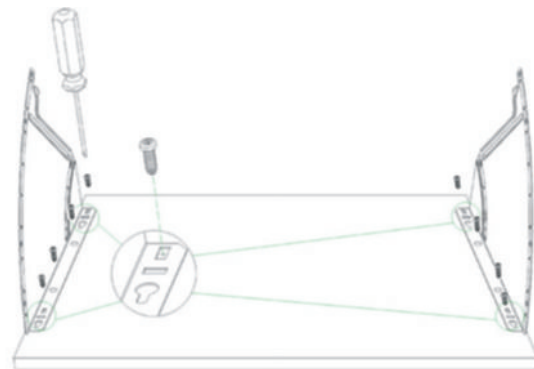
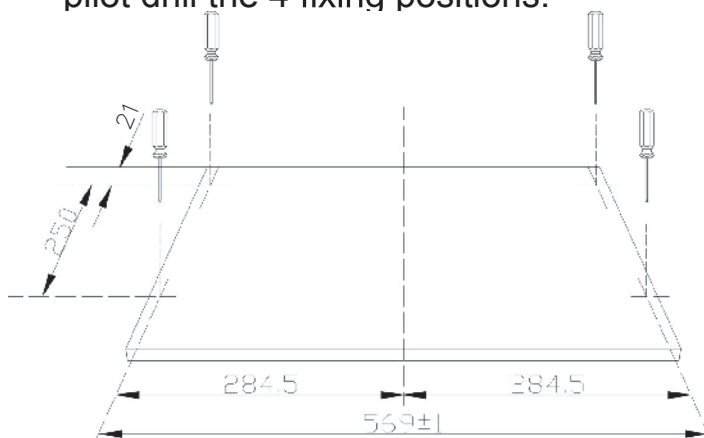
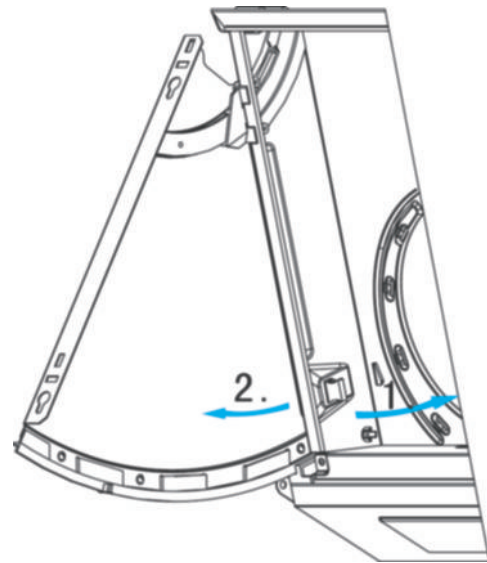
- Hang the cooker hood on the screws between the two cupboards.
- Push the fan-shaped door frames fully closed, line up the door frames 2 mm in front of, and parallel with, the front edges of the adjacent wall units (not the doors) and mark the fixing positions of the lower screws.



- Remove the extractor, drill the two lower fixing holes and re-hang the extractor.
- Ensure that the extractor is lined up correctly with the adjacent wall units, fit and tighten the two lower screws and fully tighten the two top fixing screws. Make sure all four screws are well fixed.
- Connect the air-outlet board and, if the appliance is being ducted out, the air-outlet tube.

Decor Door Installation

- The door should be no less than 16 mm thick, 385 - 700 mm high, and weigh no more than 7 kg.
- The door frames are located in two curved plastic slides on each side of the extractor body and are prevented from being pulled out too far by plastic limit clips which are accessible after removal of the perforated grease filter.
- Take care not to drop the frame, pull lightly on the plastic limit clips 1 while opening the door frames 2. Once the door frame has cleared the plastic clip, the door frame can then be removed from the body of the extractor.
- Lay the decor door face down on a protective surface, accurately mark and pilot drill the 4 fixing positions.



- Check that the screws are not too long for the decor door, to prevent damage to the door front and secure the door frames to the door, ensuring that the frames are symmetrically positioned on the decor door.
- Refit the assembly of decor door and door frames onto the extractor ensuring that all four plastic slides are correctly located. Once the door is fully closed, the plastic limit clips should once again prevent accidental removal of the door frame from the appliance.
- If the upper edge of the door is not aligned with the upper edges of the adjacent cabinet doors adjust using the 4 fixing screws.
- Once aligned, secure the door in position using a further 4 screws.

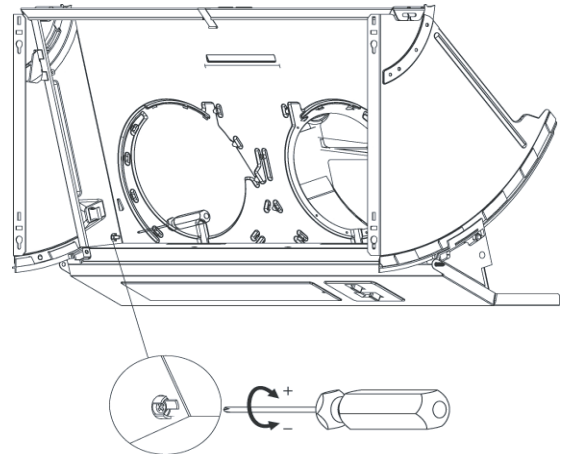
• Installation

13

Door Weight Adjustment

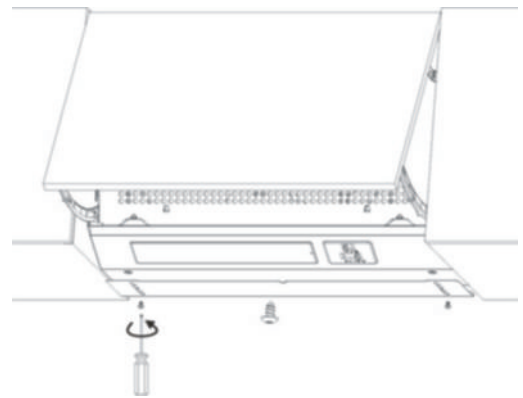
- **allow** for lighter or heavier doors, there are two screws one on each side of the extractor that can adjust the resistance of the sliding of the door.

Maximum door weight 7kg.



Bottom Trim

- Install the bottom trim to cover the gap between the wall and the bottom of the cooker hood using the two screws provided.

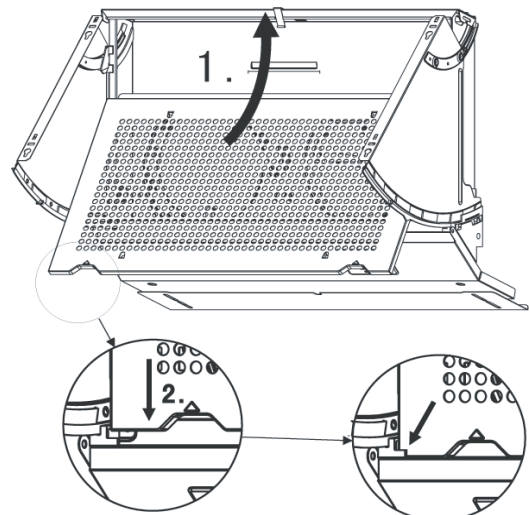


Completing the installation

Do I need a charcoal filter?

All cooker hoods have a grease filter but if you are using your cooker hood in recirculation mode, then a charcoal filter must be fitted in addition to the grease filter.

- If the extractor is to be in recirculation mode the charcoal filter (HJA2907) should be attached to the motor housing.
- Model HJA2230 has one filter.
- Model HJA2240 has two filters.
- The appliance should now be connected to the electrical supply. (See page 13)
- Fit the grease filter and then switch on the mains supply to the appliance.
- Check that the appliance is operating correctly by selecting each speed and switching the light bulb on and off.



• **Electrical Connections**

IMPORTANT: ENSURE THAT THE ELECTRICITY SUPPLY IS SWITCHED OFF BEFORE CONNECTING.

Your appliance may be connected to fixed wiring via the use of a double pole switched fused spur outlet with at least 3mm contact separation, with a pilot lamp. (See technical data for fuse rating).

We strongly recommend the appliance is connected by a qualified electrician who is a member of the N.I.C.E.I.C. or Gas Safe Register who will comply with the I.E.E and any local regulations.

NOTE:

The terminology **DOUBLE POLE** means that both the live and neutral supplies are switched and disconnected at the same time.

The terminations labelled **SUPPLY** are for the connection for the internal house wiring and the terminations labelled **LOAD** are for connection for the appliance.

WARNING

THIS APPLIANCE MUST BE EARTHED

IMPORTANT

The wires in this mains lead are coloured in accordance with the following code:-

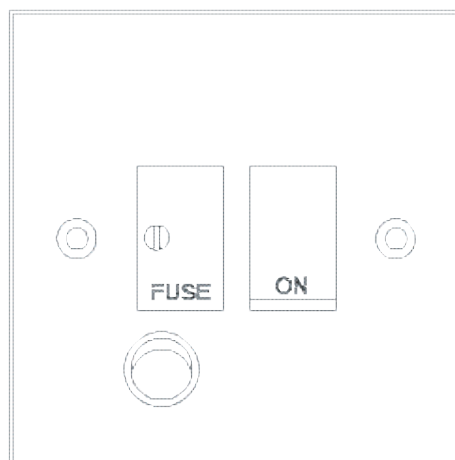
Green / Yellow *Earth*

Blue *Neutral*

Brown *Live*

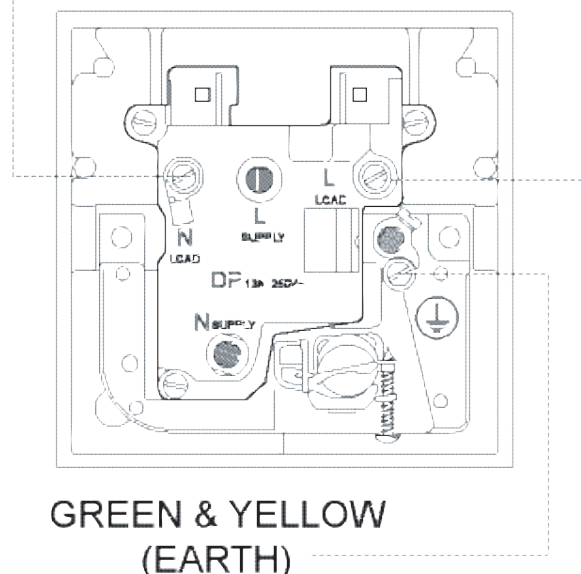
As the colours of the wires in the mains lead of this appliance may not correspond with the coloured markings identifying the terminals in your spur box, proceed as follows;

The wire which is coloured green and yellow must be connected to the terminal which is marked with the letter **E** or by the earth symbol \perp or coloured green or green and yellow. The wire which is coloured blue must be connected to the terminal which is marked with the letter **N** or coloured black. The wire which is coloured brown must be connected to the terminal which is marked with the letter **L** or coloured red.



BLUE
(NEUTRAL)

BROWN
(LIVE)



GREEN & YELLOW
(EARTH)

TECHNICAL DATA

FUSE RATING:

3AMP

• ***Something Wrong with your Extractor ?***

15

IMPORTANT: If your cooker hood appears not to be operating correctly, please refer to the checklist below before contacting the Customer Service number.

My extractor will not start.

- Check that the extractor hood is connected to the electricity supply
- Check that the fan speed control is set correctly.

My extractor is not working effectively.

- The fan speed is not set high enough
- The grease filter is dirty and requires cleaning.
- The kitchen does not have adequate ventilation.
- If the extractor is set up for recirculation mode, check that the carbon filters do not need replacing.
- If the extractor is set up for ducted-out mode, check that the ducting hose and discharge outlet are not blocked.

My extractor has switched off during operation.

- The safety cut-out device has been tripped.
- Turn off the hob and then wait for the safety cut-out device to reset.
- **IMPORTANT:** If you have installed your extractor too low, the safety cut-out device will frequently trip. Your extractor may become damaged if the safety cut-out device is tripped frequently.

IMPORTANT: If your appliance appears not to be operating correctly, then you should disconnect it from your mains supply and then contact Customer Care number on the rear page of this booklet

DO NOT ATTEMPT TO REPAIR THE APPLIANCE YOURSELF.

Please note that if an engineer is asked to attend whilst the product is under guarantee and finds that the problem is not the result of an appliance fault, then you may be liable for the cost of the call out charge.

YOUR GUARANTEE

Product Guarantee Details (UK only)

Your appliance has the benefit of a comprehensive manufacturer's guarantee which covers the cost of breakdown repairs. (Details of which are shown on your Proof of Purchase Document).

- ∞ Any claim during the period of the guarantee (MUST BE ACCOMPANIED BY THE PROOF OF PURCHASE)
- ∞ The product must be correctly installed and operated in accordance with the manufacturer's instructions and used for normal domestic purposes.
- ∞ This guarantee does not cover accidental damage, misuse or alterations which are likely to affect the product.
- ∞ The guarantee is invalid if the product is tampered with, or repaired by any unauthorised person.

(The guarantee in no way affects your statutory or legal rights)

What to do if you need to report a problem-

Please ensure you have ready:

- The product's model & serial numbers
- Howdens Proof of Purchase document
- Your full contact details.

Call the Lamona Service Line on 0845 00 60 006

This appliance is marked according to the European Directive 2002/96/EC on Waste Electrical and Electronic Equipment (WEEE). By ensuring this product is disposed of correctly you will help prevent potential negative consequences for the environment and human health. The symbol on this product indicates that this product may not be treated as household waste. Instead it should be handed over to the applicable collection point for recycling of electrical and electronic equipment. Disposal must be carried out in accordance with local environmental regulations for waste disposal. For more detailed information please contact your local council household waste site.

