

The programmes are time-controlled for lightly soiled textiles. Textiles are heavily soiled, reduce the load or cancel the additional function **Quick Wash**.

- * Max. load according to EN50229. Values in blue: "Max load for drying". Values in black: "Max load for washing".
- ** Reduced load for **Quick Wash** option.

cold = fluff rinsing programme, to remove fluff accumulated in the tub during drying cycles.

For further information and a selection of our products, go to our website: http://www.siemens-home.com	Siemens Electrogear GmbH Carl-Wery-Str. 34 42699 Solingen	WD14H320GB	9000840651 9304
---	---	------------	--------------------

Drying table

Cottons/Coloureds (textiles made of cotton or linen such as underwear, T-shirts, sweaters, trousers and kitchen towels)

Dry weight in kg	<0,5	0,5~1,0	1,0~2,0	2,0~3,0	3,0~4,0	~0,25	~0,5	~1,5	~2,5
	Estimated drying time in minutes					Selectable drying time in minutes			
Cupboard dry $R_{u\pm 1}$	<60	60~80	80~120	120~160	160~180	30	60	90	120
Cupboard dry $R_{u\pm 2}$	<65	65~85	85~130	130~165	165~180	30	60	90	120
Recommended programme	Intensive Dry ☼ ($R_{u\pm 1}$)					Intensive Dry ☼ (time)			

Quilt/Terry towel (big or thick textiles made of cotton such as terry towels, bed sheets, table cloths, jeans and workwear)

Dry weight in kg	<0,5	0,5~1,0	1,0~2,0	2,0~3,0	3,0~4,0	~0,25	~0,5	~1,0	~2,0
	Estimated drying time in minutes					Selectable drying time in minutes			
Cupboard dry $R_{u\pm 1}$	<60	60~75	75~110	110~150	150~180	30	60	90	120
Cupboard dry $R_{u\pm 2}$	<65	65~90	90~140	140~170	170~180	30	60	90	120
Recommended programme	Intensive Dry ☼ ($R_{u\pm 2}$)					Intensive Dry ☼ (time)			

Easy-Care (textiles made of synthetic or mixed fibres such as shirts, sportswear and delicate garments)

Dry weight in kg	<0,5	0,5~1,0	1,0~2,0	2,0~2,5		~0,25	~0,5	~1,0	~1,5
	Estimated drying time in minutes					Selectable drying time in minutes			
Cupboard dry $R_{u\pm 1}$	<65	65~100	100~150	150~175		30	60	90	120
Cupboard dry $R_{u\pm 2}$	<80	80~110	110~180	~180		30	60	90	120
Recommended programme	Gentle Dry ☼ (auto)					Gentle Dry ☼ (time)			

- ¹ Times are approximate and refer to a standard load, a spin programme and an ambient temperature.
- ² The maximum selectable drying time (time dry) is 120 minutes; if the load of laundry to be dried is more than 2.5 kg, please select the auto dry function. Auto dry is recommended for achieving good drying results and saving energy. The 15 minute time dry programme is for cooling down laundry.

Consumption values

Programme	Option	Load	Electricity consumption**	Water***	Programme duration***
Cotton cold	-	7,0 kg	0,25 kWh	77 l	2½ hrs
Cotton 20 °C	-	7,0 kg	0,30 kWh	77 l	2½ hrs
Cotton 40 °C**	-	7,0 kg	0,70 kWh	77 l	2½ hrs
Cotton 60 °C	-	7,0 kg	1,30 kWh	77 l	2½ hrs
Cotton 90 °C	-	7,0 kg	2,00 kWh	85 l	2½ hrs
Easy-Care 40 °C**	-	3,5 kg	0,60 kWh	60 l	1¾ hrs
Mixed Fabrics 40 °C	-	3,5 kg	0,55 kWh	52 l	1¾ hrs
Delicates/Silk 30 °C	-	2,0 kg	0,20 kWh	30 l	¾ hrs
Wool 30 °C	-	2,0 kg	0,20 kWh	40 l	¾ hrs
Cotton Eco 60 °C*	-	7,0 kg	1,22 kWh	48 l	2¾ hrs
Cotton Eco 60 °C+ Intensive Dry*	-	7,0/3,5 kg	5,67 kWh	89 l	8 hrs

* Programme setting for testing and energy labelling in accordance with EN50229, EU directive 96/60/EC. For the washing cycle, please select **Cotton Eco** with default settings. For the drying cycle, please select **Intensive Dry** with the $R_{u\pm 2}$ option.

** Programme setting for testing according to valid version of EN60456.

Note for comparative testing: when using the test programmes, wash using the specified load amount and the maximum spin speed.

*** The values deviate from the indicated values depending on water pressure, water hardness, and inlet temperature, ambient temperature, type, amount and degree of soiling of the laundry, detergent used, fluctuations in the power supply and selected additional functions.

Display and option buttons

Display symbols

	Washing: On if the washing cycle is running.
	Rinse: On if the rinse cycle is running.
	Spin: On if the spin cycle is active.
	Drying: On if the drying cycle is active.
	Overdose: Foam detected. Maybe too much detergent.
	Childproof lock: On if the childproof lock is activated. Activate/deactivate the childproof lock →Page 10
	Door: On if door can be opened.

Display information

	kg: Maximum load recommendation in kg for the selected washing/drying programme. →Page 7, Programme
	Time: e.g. 3:30*: Remaining time of programme, or 2:45*: Finish in time defined by user. →Page 9
	°C: e.g. 60 °C*: The temperature which has been set for the selected programme.
	Dry: drying mode and drying time: $R_{u\pm 1}$: Cupboard dry mode. Dries the items until they are only slightly damp. The items can be folded or hung in a cupboard to finish drying. Suitable for normal fabrics which do not need ironing. $R_{u\pm 2}$: Extra dry mode. Dries the items until they are completely dry. Suitable for thick or quilted fabrics, such as towels and bathrobes, which do not need ironing. ☼ : The drying programme is off. ☼ : Time dry, drying time defined manually. →Page 10, ☼☼ (Dry) button

☼☼: On if the door can be opened when the programme was paused.

☼☼: On if the door cannot be opened when the programme was paused.

☼☼: End of programme, or

☼☼: End of programme with the **☼☼** setting.

☼☼: Set the volume of the signals. →Page 10

☼☼: Information on the display. →Page 11

* Example of display may vary depending on selections.

Programme	Option	Load	Electricity consumption**	Water***	Programme duration***
Cotton cold	-	7,0 kg	0,25 kWh	77 l	2½ hrs
Cotton 20 °C	-	7,0 kg	0,30 kWh	77 l	2½ hrs
Cotton 40 °C**	-	7,0 kg	0,70 kWh	77 l	2½ hrs
Cotton 60 °C	-	7,0 kg	1,30 kWh	77 l	2½ hrs
Cotton 90 °C	-	7,0 kg	2,00 kWh	85 l	2½ hrs
Easy-Care 40 °C**	-	3,5 kg	0,60 kWh	60 l	1¾ hrs
Mixed Fabrics 40 °C	-	3,5 kg	0,55 kWh	52 l	1¾ hrs
Delicates/Silk 30 °C	-	2,0 kg	0,20 kWh	30 l	¾ hrs
Wool 30 °C	-	2,0 kg	0,20 kWh	40 l	¾ hrs
Cotton Eco 60 °C*	-	7,0 kg	1,22 kWh	48 l	2¾ hrs
Cotton Eco 60 °C+ Intensive Dry*	-	7,0/3,5 kg	5,67 kWh	89 l	8 hrs

* Programme setting for testing and energy labelling in accordance with EN50229, EU directive 96/60/EC. For the washing cycle, please select **Cotton Eco** with default settings. For the drying cycle, please select **Intensive Dry** with the $R_{u\pm 2}$ option.

** Programme setting for testing according to valid version of EN60456.

Note for comparative testing: when using the test programmes, wash using the specified load amount and the maximum spin speed.

*** The values deviate from the indicated values depending on water pressure, water hardness, and inlet temperature, ambient temperature, type, amount and degree of soiling of the laundry, detergent used, fluctuations in the power supply and selected additional functions.

You can change the spin speed and temperature even while the selected programme is running. The effects depend on how far along the programme has progressed.

°C (Temp.)

You can change the indicated washing temperature. The maximum washing temperature that can be selected depends on the programme that has been selected. →Page 7

☼ (Spin)

You can change the indicated spin speed. The maximum spin speed which can be selected depends on the selected programme. If **☼☼** is selected, the load is held in the rinsing water.

☼☼ (Finish in)

When you select a programme, the respective programme duration is displayed. You can delay the start of the programme before it begins. The finish-in time indicates when the programme will be finished. It can be set in hourly increments up to a maximum of 24 hours.

Press and hold the **☼☼ (Finish in)** button until the required number of hours is shown (h=hour). Select **☼☼ Start/Reload**, the door is locked.

Additional functions and Individual settings

☼☼ (Dry)

You can activate, deactivate and set the drying function by touching this option button. Mode of washing and drying without interruption is auto dry; when the single drying programme is selected, you can choose auto dry, or time dry with a desired drying time. Set the drying time →refer to page 8, **Drying table**

☼☼ (Dry)

☼☼ (Dry)

☼☼ (Dry)

☼☼ (Dry)

☼☼ (Dry)

☼☼ (Dry)

☼☼ (Dry)

☼☼ (Dry)

☼☼ (Dry)

☼☼ (Dry)

☼☼ (Dry)

☼☼ (Dry)

☼☼ (Dry)

☼☼ (Dry)

☼☼ (Dry)

☼☼ (Dry)

☼☼ (Dry)

☼☼ (Dry)

☼☼ (Dry)

☼☼ (Dry)

☼☼ (Dry)

☼☼ (Dry)

☼☼ (Dry)

☼☼ (Dry)

☼☼ (Dry)

☼☼ (Dry)

☼☼ (Dry)

☼☼ (Dry)

☼☼ (Dry)

☼☼ (Dry)

☼☼ (Dry)

Information on the display

☼☼ (Dry)

☼☼ (Dry)

☼☼ (Dry)

☼☼ (Dry)

☼☼ (Dry)

☼☼ (Dry)

☼☼ (Dry)

☼☼ (Dry)

☼☼ (Dry)

☼☼ (Dry)

☼☼ (Dry)

☼☼ (Dry)

☼☼ (Dry)

☼☼ (Dry)

☼☼ (Dry)

☼☼ (Dry)

☼☼ (Dry)

☼☼ (Dry)

☼☼ (Dry)

☼☼ (Dry)

☼☼ (Dry)

☼☼ (Dry)

☼☼ (Dry)

☼☼ (Dry)

☼☼ (Dry)

☼☼ (Dry)

☼☼ (Dry)

☼☼ (Dry)

☼☼ (Dry)

☼☼ (Dry)

☼☼ (Dry)

☼☼ (Dry)

☼☼ (Dry)

What to do if ...

☼☼ (Dry)

☼☼ (Dry)

☼☼ (Dry)

☼☼ (Dry)

☼☼ (Dry)

☼☼ (Dry)

☼☼ (Dry)

☼☼ (Dry)

☼☼ (Dry)

☼☼ (Dry)

☼☼ (Dry)

☼☼ (Dry)

☼☼ (Dry)

☼☼ (Dry)

☼☼ (Dry)

☼☼ (Dry)

☼☼ (Dry)

☼☼ (Dry)

☼☼ (Dry)

☼☼ (Dry)

☼☼ (Dry)

☼☼ (Dry)

☼☼ (Dry)

☼☼ (Dry)

☼☼ (Dry)

☼☼ (Dry)

☼☼ (Dry)

☼☼ (Dry)

☼☼ (Dry)

☼☼ (Dry)

☼☼ (Dry)

☼☼ (Dry)

☼☼ (Dry)

What to do if ...

☼☼ (Dry)

☼☼ (Dry)

☼☼ (Dry)

☼☼ (Dry)

☼☼ (Dry)

☼☼ (Dry)

☼☼ (Dry)

☼☼ (Dry)

☼☼ (Dry)

☼☼ (Dry)

☼☼ (Dry)

☼☼ (Dry)

☼☼ (Dry)

☼☼ (Dry)

☼☼ (Dry)

☼☼ (Dry)

☼☼ (Dry)

☼☼ (Dry)

☼☼ (Dry)

☼☼ (Dry)

☼☼ (Dry)

☼☼ (Dry)

☼☼ (Dry)

☼☼ (Dry)

☼☼ (Dry)

☼☼ (Dry)

☼☼ (Dry)

☼☼ (Dry)

☼☼ (Dry)

☼☼ (Dry)

☼☼ (Dry)

☼☼ (Dry)

☼☼ (Dry)

What to do if ...

☼☼ (Dry)

☼☼ (Dry)

☼☼ (Dry)

☼☼ (Dry)

☼☼ (Dry)

☼☼ (Dry)

☼☼ (Dry)

☼☼ (Dry)

☼☼ (Dry)

☼☼ (Dry)

☼☼ (Dry)

☼☼ (Dry)

☼☼ (Dry)

☼☼ (Dry)

☼☼ (Dry)

☼☼ (Dry)

☼☼ (Dry)

☼☼ (Dry)

☼☼ (Dry)

Your washer dryer

Congratulations – You have opted for a modern, high-quality domestic appliance manufactured by SIEMENS. The washer dryer is distinguished by its economical use of water and energy. Each appliance which leaves our factory is inspected thoroughly to ensure that it functions properly and is in perfect condition.

For further information about products, accessories, spare parts and services, visit our website: www.siemens-home.com or contact our after-sales service centres.

Contents

■ Intended use	1
■ Preparation	1/2
■ Preparation for washing or washing+drying	2/3/4
■ Preparation for drying	2/3/4
■ Set and adjust the programme	3/4/5
■ After washing/drying	5
■ Important information	6
■ Programme overview	7
■ Drying table	8
■ Consumption values	8
■ Display and option buttons	9
■ Additional functions and individual settings	10
■ Information on the display	11
■ Safety instructions	11
■ What to do if	12/13
■ Emergency release	13

Intended use

- For domestic use only.
- For washing machine-washable fabrics in a detergent solution.
- To be operated with cold mains water and commercially available low foam detergents and care products which are suitable for use in a front loaded washer dryer.



- Do not leave children unattended near the washer dryer.
- Keep pets away from the washer dryer!
- The washer dryer is not to be used by children or persons not familiar with the operating instructions.
- Install and operate the washer dryer in a room with a drain.
- In order to ensure your safety, you must plug the cable into a socket which is correctly connected to an earth connection.

Preparation

Before using for the first time → Page 6

The washer dryer was tested before leaving the factory. To remove any water left over from the testing procedures, run the first cycle of the **Fluff Clean** programme without any laundry. →Page 6: **Before using for the first time**



Correct installation according to separate Installation and maintenance instructions.



Check the machine

- Never switch on a damaged machine.
- Inform your after-sales service.



Insert the mains plug



With dry hands only.
Only hold the plug by the plug body.



Turn on the tap

- Due to the use of the water condensation technology for drying, please keep the connected water tap open during the drying process, otherwise proper drying cannot be guaranteed.



Protection of the environment/ Conservation tips

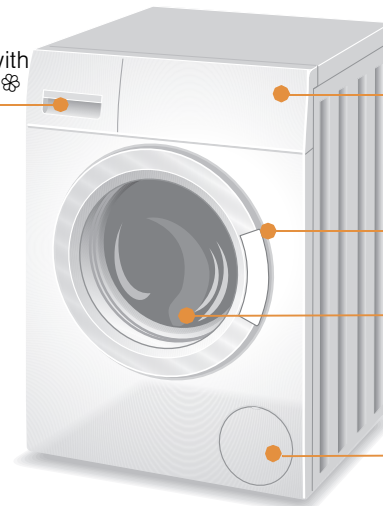
- Load the maximum amount of laundry to wash or dry for the particular programme. →Page 7: **Programme overview**
- Do not use prewash when washing laundry that is soiled normally.
- Select **Cotton Eco 60°C** to obtain good cleaning results with significantly lower energy consumption.
- Dose detergent according to the manufacturer's instructions and water hardness.
- If the laundry is to be dried in the appliance afterwards, select the highest selectable spin speed – because the more water that is spun out of the appliance, the less time and energy is required to dry it.
- If hand-washed laundry or dripping-wet laundry needs to be dried, please select the **Spin** programme with the option washing and drying without interruption, otherwise it will **waste time and energy**.

Drying

Washing

Washing & Drying without interruption

Detergent drawer with compartments I, II, ⌘



Control panel

Door handle

Drum

Service flap

Programme selector

Display panel/ Option buttons/ Additional functions

Start/ Reload



Programme selector for switching the machine on and off and for selecting the programme. Can be rotated in either direction.
Detailed programme overview. →Page 7/8

Sort and load the laundry

- Observe the care information provided by the manufacturer.
- Sort the laundry according to the information on the care labels.
- Sort the laundry according to type, colour, degree of soiling and temperature.
- Remove any foreign objects as there is a risk of rusting.
- Do not exceed the maximum load. →Page 7
- If drying programme is selected. →Page 4: **Sort and load the laundry (drying)**

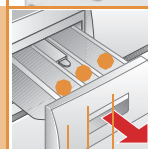


- Observe the instructions in the Important information section. →Page 6
- Load both large and small items of laundry.
- Close the washer dryer door. Take care not to trap any items of clothing between the loading door and rubber seal.



Add detergent and care product

- Add the appropriate amount according to: Amount of laundry, level of soiling, water hardness (ask your water supply company) and manufacturer's instructions.
- Pour liquid detergent into an appropriate dispenser and place in the drum.
- Only use commercially available low foam detergents in the washer dryer.
- During operation: close the detergent drawer.
- Dilute viscous fabric softener and fabric conditioner with water. This prevents blockages.



Compartment II: Detergent for the main wash, water softener, bleach, stain remover

Compartment ⌘ : Fabric softener

Compartment I: Detergent for pre-wash

Set and adjust the programme

- Turn the programme selector to the desired washing programme. →Page 7: **Programme overview**
- Use the option buttons and additional functions. →Page 9/10



*All buttons are sensitive and a gentle touch is adequate!
If you press and hold the °C (Temp.), ⌘ (Spin) or ⌚ (Finish-in) option buttons, the setting options automatically scroll through.*

If washing and drying without interruption is desired (only possible for **Cotton**, **Cotton+Pre-wash**, **Cotton Eco**, **Easy-Care**, **Mixed Fabrics**, **Rinse**, **Spin**, **Rapid 15' wash&dry 60'** and **Outdoor Wear**), touch the **☼☼ (Dry)** button to change the drying mode as shown below:

- ☼☼☼ (drying mode is not activated)
- Intensive Dry ☼☼☼ ☼, Intensive Dry ☼☼☼☼☼ (☼ indicator light is on, Intensive Dry is selected)
- Gentle Dry ☼☼☼ ☼, Gentle Dry ☼☼☼☼☼ (☼ indicator light is on, Gentle Dry is selected).

Detailed description of the drying mode. →Page 9.

Select drying modes. →Page 7, **Programme overview**.

For **Mixed Fabrics**, **Rinse** and **Spin**, please select the appropriate drying mode (☼ **Intensive Dry** or ☼ **Gentle Dry**) for the laundry. For other programmes, it is recommended to use the default drying mode.



Sort and load the laundry (drying)



Only dry laundry that is labelled with the following care symbols:

- ☼ = tumble-dry at a normal heat setting (**Intensive Dry** ☼).
- ☼ = tumble-dry at a low heat setting (**Gentle Dry** ☼).

The following textiles should not be tumble-dried:

- ☼☼ = do not tumble-dry care symbol.
- Woollens or items containing wool. **Risk of shrinking!**
- Delicate fabric (silk, synthetic net curtain). **Risk of creasing!**
- Items containing foam rubber or a similar material.
- Items which have been treated with flammable solvents, such as stain removers, petrol, paint thinners. **Explosion hazard!**
- Items still containing hair lacquer or similar substances.

Dangerous vapours!

Do not exceed the maximum drying load. →Page 7

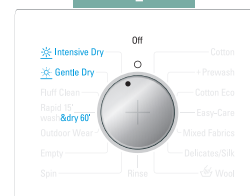
Set and adjust the drying programme

- Turn the programme selector to ☼ **Intensive Dry** or ☼ **Gentle Dry** →Page 7: **Programme overview**

The default drying mode is ☼☼☼☼☼, in this mode the drying time is automatically adjusted to the size of the load to obtain cupboard dry laundry that is ready to fold and stack in the cupboard. You can change the drying mode to ☼☼☼☼☼ in order to obtain extra dry laundry or change it to time dry and set the drying time by touching the ☼☼☼☼☼ (Dry) button. To estimate or set the drying time. →Page 8: **Drying table**



*All buttons are sensitive and a gentle touch is adequate!
If you press and hold the ⌚ (Finish-in) option button, the setting options automatically scroll through.*



2

Select **Start/Reload**

... Drying

2

Select **Start/Reload**

... Washing/Washing + Drying



Remove the laundry

Open the washer dryer door and remove the laundry. Leave the washer dryer door and detergent drawer open so that any residual water can evaporate!



Turn off the tap

Not required for Aqua-Stop models. → *Installation and maintenance instructions: Page 9*



Switch off

- Set the programme selector to **Off**.

End of programme when ...

... **Start/Reload** indicator light goes out and - - - - (if - - - - was selected, no final spin/drain) appears on the display panel, the buzzer sounds. Set the volume of the buzzer. → *Page 10*

If - - - - was selected and - - - - is displayed, touch the **Start/Reload** button. The programme continues draining the water and spinning the laundry at the default speed (the default spin speed can be changed prior to touching the **Start/Reload** button).

– If you only want to drain the water, touch the **Start/Reload** button again when draining has finished and spinning starts. The programme is paused and the door lock is released. You can remove the laundry.

If **h** flashes on the display panel before the drying cycle has finished → the drum has a high temperature. The cool-down programme runs until the drum has cooled down.

3

Changing the programme ...

If you have selected the wrong programme by mistake:

- Reselect the washing/drying programme.
- If required, adjust the programme setting and/or select additional functions. → *Page 9/10*
- Select **Start/Reload**.

Pausing the programme ...

- Touch the **Start/Reload** button.
- Follow the instructions in the display panel: when **●** lights up and **555** appears in the display, the door can be opened. If required, add /remove a laundry item; if **77** is displayed, the door cannot be opened due to a high water level in the drum or a high temperature.
- Touch **Start/Reload** button to continue the programme.
- The pause function cannot be activated during the drying cycle.

... or terminate the programme

Washing programmes with a high temperature:

- Cool down laundry: Select **Rinse** and touch **Start/Reload**.

Washing programmes with a lower temperature:

- Select **Spin** and touch **Start/Reload**.

Drying programme:

- Select **Intensive Dry** or **Gentle Dry**, touch the **(Dry)** option button, set a drying time of 15 minutes and then touch **Start/Reload** button.



Important information



Preparing for washing and drying/Protecting the laundry and the machine

- Empty any pockets.
- Check for metal items (paper clips, etc.).
- Trousers, knitwear and knitted textiles, e.g. jersey garments, T-shirts or sweatshirts should be turned inside out.
- Ensure that underwired bras are machine washable.
- Wash delicates in a net/bag (tights, curtains, underwired bras).
- Fasten zips, do up any buttons.
- Brush sand out of pockets and collars.
- Remove curtain hooks or place curtains in a net/bag.
- Only use tumble-dry textiles if you select drying.
- Remove as much water as possible before tumble-drying. The recommended spin speed for cottons is more than 1000 rpm; for easy-care use more than 800 rpm.
- In order to ensure uniform drying, sort the items according to fabric type and degree of drying required.
- Items which require ironing do not have to be ironed immediately after being tumble-dried. It is a good idea to fold or roll them together for a while, so that any remaining moisture is evenly distributed.
- To achieve good drying results, dry quilt covers, terry towels or other large textile items individually. Do not dry more than 4 terry towels (or 3 kg) at a time.



Before using for the first time

Do not put any laundry in the washer dryer. Turn on the tap, pour ½ a measuring cup of detergent into compartment **II**. Set the **Fluff Clean 40 °C** programme and select **Start/Reload**. At the end of the programme, set the programme selector to **Off**.



After a long period of not using or moving the machine

The syphon may be empty. If you select a single drying programme to prevent the hot and humid steam from coming out of the empty syphon, the tap water will automatically flow into the machine to fill the syphon at the beginning of the programme.



Laundry with different levels of soiling

Light



Wash new items separately.

Do not prewash.

If required, pre-treat stains. Select the **Cotton Eco** programme.

Heavy

Load less laundry. If required, pre-treat stains. Select the **Cotton Eco** programme or **Cotton+Prewash** programme.



Soaking

Load laundry of the same colour.

Pour soaking agent/detergent into compartment **II** according to the manufacturer's instructions. Set **Cotton 30 °C** programme and select **Start/Reload**. After approx. 10 minutes, select **Start/Reload**. After the required soaking time, reselect **Start/Reload** if the programme is to be continued or change the programme.



Starching

Laundry must not be treated with fabric softener.

Starching is possible with all washing programmes using liquid starch. Pour the starch into the fabric softener compartment according to the manufacturer's instructions (if necessary clean it first).



Dyeing/bleaching

Dye should only be used in normal quantities. Salt may damage stainless steel. Always follow the dye manufacturer's instructions. **Do not** bleach laundry in the washing machine.

Drying table



Cottons/Coloureds (textiles made of cotton or linen such as underwear, T-shirts, sweaters, trousers and kitchen towels)

Dry weight in kg		<0,5	0,5~1,0	1,0~2,0	2,0~3,0	3,0~4,0	~0,25	~0,5	~1,5	~2,5
		Estimated drying time in minutes					Selectable drying time in minutes			
Cupboard dry	Auto 1	< 60	60~80	80~120	120~160	160~180	30	60	90	120
	Auto 2	< 65	65~85	85~130	130~165	165~180				
Recommended programme		Intensive Dry 熨 (Auto 1)					Intensive Dry 熨 (time)			

Quilt/Terry towel (big or thick textiles made of cotton such as terry towels, bed sheets, table cloths, jeans and workwear)

Dry weight in kg		<0,5	0,5~1,0	1,0~2,0	2,0~3,0	3,0~4,0	~0,25	~0,5	~1,0	~2,0
		Estimated drying time in minutes					Selectable drying time in minutes			
Cupboard dry	Auto 1	< 60	60~75	75~110	110~150	150~180	30	60	90	120
	Auto 2	< 65	65~90	90~140	140~170	170~180				
Recommended programme		Intensive Dry 熨 (Auto 2)					Intensive Dry 熨 (time)			

Easy-Care (textiles made of synthetic or mixed fibres such as shirts, sportswear and delicate garments)

Dry weight in kg		<0,5	0,5~1,0	1,0~2,0	2,0~2,5		~0,25	~0,5	~1,0	~1,5
		Estimated drying time in minutes					Selectable drying time in minutes			
Cupboard dry	Auto 1	<65	65~100	100~150	150~175		30	60	90	120
	Auto 2	< 80	80~110	110~180	~180					
Recommended programme		Gentle Dry  (auto)					Gentle Dry  (time)			

i Times are approximate and refer to a standard load, a spin programme and an ambient temperature.

i The maximum selectable drying time (time dry) is 120 minutes, if the load of laundry to be dried is more than 2.5 kg, please select the auto dry function. Auto dry is recommended for achieving good drying results and saving energy. The 15 minute time dry programme is for cooling down laundry.

Consumption values

Programme	Option	Load	Electricity consumption***	Water***	Programme duration***
Cotton cold	-	7,0 kg	0,25 kWh	77 l	2½ hrs
Cotton 20 °C	-	7,0 kg	0,30 kWh	77 l	2½ hrs
Cotton 40 °C **	-	7,0 kg	0,70 kWh	77 l	2½ hrs
Cotton 60 °C	-	7,0 kg	1,30 kWh	77 l	2½ hrs
Cotton 90 °C	-	7,0 kg	2,00 kWh	85 l	2½ hrs
Easy-Care 40 °C **	-	3,5 kg	0,60 kWh	60 l	1¾ hrs
Mixed Fabrics 40 °C	-	3,5 kg	0,55 kWh	52 l	1¼ hrs
Delicates/Silk 30 °C	-	2,0 kg	0,20 kWh	30 l	¾ hrs
Wool 30 °C	-	2,0 kg	0,20 kWh	40 l	¾ hrs
Cotton Eco 60 °C*	-	7,0 kg	1,22 kWh	48 l	2¾ hrs
Cotton Eco 60 °C + Intensive Dry*	-	7,0/3,5 kg	5,67 kWh	89 l	8 hrs

* Programme setting for testing and energy labelling in accordance with EN50229, EU directive 96/60/EC. For the washing cycle, please select **Cotton Eco** with default settings. For the drying cycle, please select **Intensive Dry** with the Auto 2 option.

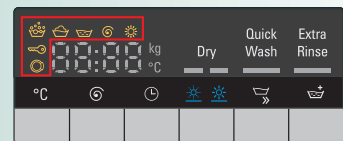
** Programme setting for testing according to valid version of EN60456.

Note for comparative testing: when using the test programmes, wash using the specified load amount and the maximum spin speed.

*** The values deviate from the indicated values depending on water pressure, water hardness, and inlet temperature, ambient temperature, type, amount and degree of soiling of the laundry, detergent used, fluctuations in the power supply and selected additional functions.

Display and option buttons

Display symbols



☞ **Washing:** On if the washing cycle is running.

☞ **Rinse:** On if the rinse cycle is running.

☞ **Spin:** On if the spin cycle is active.

☞ **Drying:** On if the drying cycle is active.

☞ **Overdosage:** Foam detected. Maybe too much detergent.

☞ **Childproof lock:** On if the childproof lock is activated. Activate/deactivate the childproof lock →Page 10

☞ **Door:** On if door can be opened.

Display information



kg, 7,0*: Maximum load recommendation in kg for the selected washing/drying programme. →Page 7, **Programme**

Time, e.g. 1:30*: Remaining time of programme, or

2:45*: Finish in time defined by user. →Page 9

°C, e.g. 50 °C*: The temperature which has been set for the selected programme.

Dry, drying mode and drying time:

Auto 1: Cupboard dry mode. Dries the items until they are only slightly damp. The items can be folded or hung in a cupboard to finish drying. Suitable for normal fabrics which do not need ironing.

Auto 2: Extra dry mode. Dries the items until they are completely dry. Suitable for thick or quilted fabrics, such as towels and bathrobes, which do not need ironing.

Off: The drying programme is off.

1:20*: Time dry, drying time defined manually. →Page 10, **☞☞☞ (Dry)** button

☞☞☞: On if the door can be opened when the programme was paused.

☞☞☞: On if the door cannot be opened when the programme was paused.

- ☞☞☞ -: End of programme, or

- - - -: End of programme with the - - - - setting.

☞*: Set the volume of the signals. →Page 10

☞☞☞☞: Information on the display. →Page 11

Option buttons

You can change the spin speed and temperature even while the selected programme is running. The effects depend on how far along the programme has progressed.

°C (Temp.)

You can change the indicated washing temperature. The maximum washing temperature that can be selected depends on the programme that has been selected. →Page 7

☞ (Spin)

You can change the indicated spin speed. The maximum spin speed which can be selected depends on the selected programme. If - - - - is selected, the load is held in the rinsing water.

☞ (Finish in)

When you select a programme, the respective programme duration is displayed. You can delay the start of the programme before it begins. The finish-in time indicates when the programme will be finished. It can be set in hourly increments up to a maximum of 24 hours.

Press and hold the ☞ (**Finish in**) button until the required number of hours is shown (h=hour). Select ☞ **Start/Reload**, the door is locked.

Additional functions and Individual settings

☀☀ (Dry)

You can activate, deactivate and set the drying function by touching this option button. Mode of washing and drying without interruption is auto dry; when the single drying programme is selected, you can choose auto dry, or time dry with a desired drying time. Set the drying time →refer to page 8, **Drying table**

Additional functions

See also **Programme overview** →Page 7

Select or cancel the additional function with the **Quick Wash** or **Extra Rinse** button:

- The indicator lights of the buttons come on if additional functions are active.
- Switching off the additional option: touch the button again. The indicator light goes out.
- You can select two additional functions at the same time for some programmes.

Quick Wash

Shorten the washing time. For slightly soiled items.

Extra Rinse

Additional rinse cycles, extended washing time. For regions with very soft water or for further improvement of the rinsing result.

↻ Start/Reload

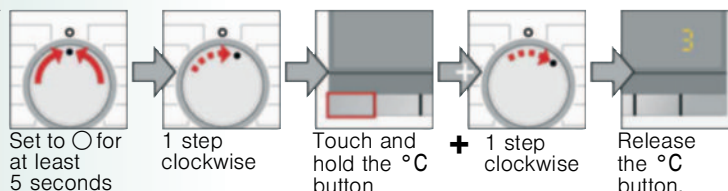
For starting or pausing the washing/drying programme.

Hibernate mode

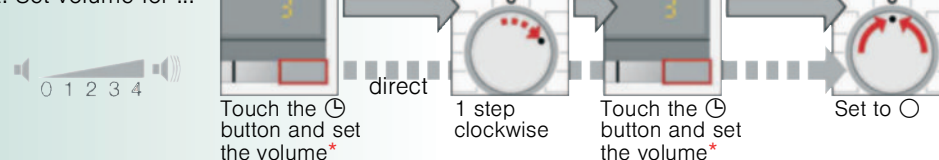
The back light of the display will go out if the machine is not operated for 5 minutes before the programme starts, when the finish-in time starts counting down, or the programme ends. Touch any button first to activate the back light, then you can operate the machine.

Signal volume (for button signal and information signal)

1. Activate the setting mode for the signal volume



2. Set volume for ...



*If required, set repeatedly.

Childproof lock

Programme will not be changed by accidental operation.

To activate the childproof lock:

- After the programme starts or the finish-in time is activated →Page 9, press and hold the (**Finish in**) button for 5 seconds;
- Release when the symbol lights up. If button signal is on, an acoustic signal will be heard.

When the programme ends, the **Start/Reload** indicator remains on to remind you to deactivate the childproof lock.

To deactivate the childproof lock:

- Touch the (**Finish in**) button until the symbol turns off.
- Release the button.

symbol flashes if the programme has been changed while childproof lock is activated.

If the childproof lock is deactivated while the programme selector is in a different position from when the childproof lock was activated, the programme which is currently running be halted.

Information on the display

R:01

Please close the door immediately because the water level is rising. In the pause status, R:01 and YES are displayed alternately.

NO

In pause status, NO is flashing if the spin speed is high, please just wait to let the spin speed drop down. If NO is continuously display in pause status then it means door is locked due to safety reasons(water level and/or temperature are too high). For the **washing programme**: If you need to open the door, wait for the temperature to drop or drain the water (e.g. select the **Spin** or **Empty** programme). For the **drying programme**: If you need to open the door, wait for the temperature drop or set the time dry programme for 15 minutes to allow the laundry to cool down.

R:03

The door cannot be locked/unlocked due to the high temperature of the door lock. Keep the machine switched on for about 1 minute. Then the machine can be locked/unlocked again.

hot

The door cannot be opened after the drying programme because the temperature is too high. The cooling process will continue until this display disappears and the door can be opened. If the laundry needs to be removed as soon as possible, select the **Intensive Dry** programme and set the time dry function to 15 minutes to allow the laundry to cool down.

E:17

No water supply during washing
Tap turned on? Supply hose kinked or blocked?
Inlet filter blocked? **Clean the filter** →Installation and maintenance instructions, Page 8

E:95

No water supply during drying
Tap turned on? Inlet filter blocked? Cooling water valve faulty?

E:18

Clean the drain pump →Installation and maintenance instructions, Page 8;
outlet pipe/drainage hose blocked.

Flashing: The machine detected an imbalance in the drum that cannot be adjusted. The maximum spin speed cannot be reached in order to protect the machine. The washing solution will not be removed completely after spinning, and the subsequent drying programme is automatically stopped.
If the drying cycle stops and **hot** flashes on the display, the cooling programme will keep running automatically until **hot** disappears and the door can be opened.
- Wash or dry small and large items of laundry together.

H 1.0 kg

After the auto drying cycle, the symbols and **End** are displayed alternately, suggesting that the drying result may not be satisfactory.
- H 1.0: the amount of laundry is too much. 1.0: the amount of laundry is too little.

Other displays

Switch off the appliance, wait 5 seconds and switch it back on.
If the display appears again, call customer service.



Safety instructions

- Read and follow the *operating instructions* as well as the *installation and maintenance instructions* and all other information enclosed with the washer dryer.
- Retain documents for subsequent use.

Risk of electric shock

- Never pull out the mains plug by pulling on the power cord.
- Never insert/pull out the mains plug with wet hands.

Risk of death

For worn-out appliances:

- Pull out the mains plug.
- Sever the power cord and discard together with the plug.
- Destroy the lock on the washer dryer door. This will prevent children from locking themselves in and putting their lives at risk.

Risk of suffocation

- Keep packaging, plastic film and packaging parts out of the reach of children.

Risk of poisoning

Risk of explosion

- Keep detergents and care products out of the reach of children.
- Items of laundry pretreated with cleaning agents containing solvents, e.g. stain remover/cleaning solvents may lead to an explosion after being loaded into the washer dryer. Rinse items of laundry thoroughly by hand beforehand.

Risk of injury

- Washer dryer door may become very hot.
- Take care when draining hot detergent solution.
- Do not climb onto the washer dryer.
- Do not lean on the washer dryer door when it is open.
- Do not touch the drum in case it is still spinning.
- Ensure that the pump cap is screwed on while the machine is running to prevent water from leaking out and coming into contact with moving pump parts.
- If a drying programme was interrupted, the washer dryer and the laundry may be very hot, select **Intensive Dry** or **Gentle Dry** and set the time dry programme to 15 minutes to allow the laundry to cool down, then remove the laundry.

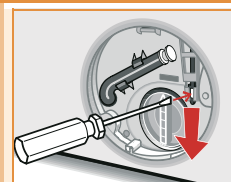
What to do if ...

Water is leaking out.	<ul style="list-style-type: none"> Fit/refit the drainage hose correctly. Tighten the screw connection of the supply hose.
There is no water supply. Detergent is not dispensed.	<ul style="list-style-type: none"> ❖ Start/Reload not selected? Tap not turned on? Filter blocked? Clean the filter. → <i>Installation and maintenance instructions, Page 8</i> Supply hose kinked or trapped? There is water in the drum already.
Washer dryer door cannot be opened.	<ul style="list-style-type: none"> Safety function active. Programme stopped? → <i>Page 5</i> - - - (no final spin/drain) selected? → <i>Page 5</i> Can be opened by emergency release only. → <i>Page 13</i> Childproof lock activated? Deactivate it → <i>Page 10</i>
Programme does not start.	<ul style="list-style-type: none"> ❖ Start/Reload or ⏻ (Finish in) selected? Washer dryer door closed properly?
Detergent solution is not drained.	<ul style="list-style-type: none"> Clean the drain pump. → <i>Installation and maintenance instructions, Page 8</i> Clean the waste pipe and/or drainage hose.
Water not visible in the drum.	<ul style="list-style-type: none"> Not a fault - water below the visible area.
The spin result is not satisfactory.	<ul style="list-style-type: none"> Wash small and large items of laundry together. Selected speed too low? → <i>Page 9</i>
The spin cycle performs several times.	<ul style="list-style-type: none"> This is not a fault – the unbalanced load detection system adjusts the imbalance.
Compartment ⌘ is not rinsed out completely.	<ul style="list-style-type: none"> Remove the insert. Clean the detergent drawer and insert it again. → <i>Installation and maintenance instructions, Page 7</i>
Odour forms in the washer dryer.	<ul style="list-style-type: none"> Run the Fluff Clean cold programme without laundry. Use standard detergents.
Foam escapes from the detergent drawer.	<ul style="list-style-type: none"> Too much detergent used? Mix 1 tablespoon of fabric softener with ½ litre of water and pour this mixture into compartment II in the detergent drawer. Reduce the detergent dosage for the next wash cycle. Use commercially available low foam detergents and care products which are suitable for use in the washer dryer.
Excessive noise, vibrations and "wandering" during the spin cycle.	<ul style="list-style-type: none"> Are the appliance's feet fixed? Secure the appliance's feet. → <i>Installation and maintenance instructions, Page 5</i> Have the transport bolts been removed? Remove the transport bolts. → <i>Installation and maintenance instructions, Page 3</i>
Display panel/indicator lights do not function while the appliance is running.	<ul style="list-style-type: none"> Power failure? Circuit breaker tripped? Reset the circuit breaker/change the fuse. If the fault occurs repeatedly, call after-sales service.
The programme sequence is longer than usual.	<ul style="list-style-type: none"> This is not a fault – the unbalanced load detection system adjusts any imbalance by repeatedly distributing the laundry. Not a fault – the foam detection system is active; it adds an additional rinse cycle.
There are detergent residues on the laundry.	<ul style="list-style-type: none"> Occasionally, phosphate-free detergents contain water-insoluble residues. Select Rinse or brush the laundry after washing.
Spinning noise during drying.	<ul style="list-style-type: none"> This is an innovative process called thermospinning to reduce energy consumption during drying.
Differently coloured fluff from the previous drying cycle is redeposited on the laundry in the following washing cycle.	<ul style="list-style-type: none"> Run the Fluff Clean cold programme without laundry to remove fluff which has accumulated in the tub during tumble drying.

What to do if ...

Drying takes too long.	<ul style="list-style-type: none"> According to the water cooling technology a higher water temperature will result in lower drying performance and an increased drying time. If dripping laundry is put inside the drum to dry directly or laundry has not been spun well enough before drying, the drying time will be longer. Run the Fluff Clean cold programme without laundry to remove fluff which has accumulated in the tub and drying system.
Drying programme does not start.	<ul style="list-style-type: none"> Drying programme not selected? → <i>Page 10: ☼☼ (Dry) option button and Page 7: Programme overview</i> Washer dryer door not closed properly? Ⓢ flashes? Wash small and large items of laundry together. The pump is blocked. → <i>Installation and maintenance instructions, Page 8: Clean the pump</i>
The drying result is not satisfactory (laundry is not dry enough).	<ul style="list-style-type: none"> Water temperature is too high. The laundry has not been spun well enough before drying – always set the highest selectable spin speed for all washing programmes. Machine overloaded: please follow the load recommendation in the programme table and on the load display, do not overload the machine, as the maximum load for drying is lower than for washing. Unload the machine after washing a maximum load of laundry and separate the load into two drying cycles. The line voltage of the power supply is too low, too high, or unstable. Thick multilayered textiles or textiles with thick fillings – these textiles easily dry on the surface, but not inside. This drying process may take longer. Please use time drying programmes to dry these kinds of textiles completely.
A small amount of water can be seen dripping on the dried load of laundry when the door is opened.	<ul style="list-style-type: none"> Opening the door quickly creates a suction effect which can pull any remaining water drops from the drying system. Open the door slowly. Avoid jerking the door open.
If you cannot correct a fault yourself or a repair is required:	<ul style="list-style-type: none"> Turn the programme selector to ⏻ Off and disconnect the mains plug. Turn off the tap and call customer service.

Emergency release e.g. in the event of power failure



The programme will continue to run when the power is restored. However, if the laundry has to be removed, the washing machine door can be opened as follows:

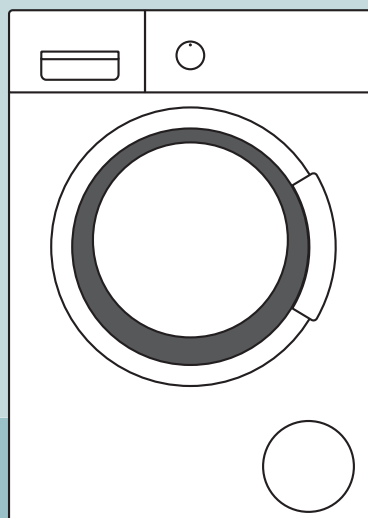


Risk of scalding.
The detergent solution and laundry may be hot.
If possible, leave it to cool down.
Do not open the washer dryer door if water can be seen through the glass.

- Set the programme selector to ⏻ **Off** and disconnect the mains plug.
- Drain the detergent solution. → *Installation and maintenance instructions, Page 8*
- Pull the emergency release with a tool and release it. The washer dryer door can then be opened.



Follow the safety instructions on page 11.



Washer dryer

Operating instructions

en

WD14H320GB



Read these instructions before switching on the washer dryer. Also follow the separate Installation and maintenance instructions.

SIEMENS