

**Gebrauchsanweisung**

Instructions for use

**Mode d'emploi**

Gebruiksaanwijzing

**Istruzioni per l'uso****Brugsanvisning**

Bruksanvisning

**Käyttöohje**

Manual de utilização

**Instrucciones para el uso****Οδηγίες χρήσης**

Instrukcje użytkowania

**Használati utasítás**

Инструкция за употреба

**Návod k použití**

Návod na použitie

**Instrucțiuni de utilizare**

Инструкции по эксплуатации

**تعليمات الاستعمال**



# INSTRUCTIONS FOR USE

HOW TO USE THE FREEZER

HOW TO DEFROST AND CLEAN THE FREEZER

CARE AND MAINTENANCE

TROUBLESHOOTING GUIDE

AFTER-SALES SERVICE

INSTALLATION

ELECTRICAL CONNECTION

# HOW TO USE THE FREEZER

The freezer can be used for storing already frozen food and for freezing fresh food.

## Switching on the freezer for the first time

- There is no need to set the freezer temperature on the thermostat because the appliance is already factory set.
- Plug in the appliance.
- The alarm signal activates, indicating that the freezer has not yet reached a sufficiently cold temperature for storage of foodstuffs.
- Only place food in the freezer once the alarm signal has deactivated (for further details, see the enclosed product sheet).

## Temperature Adjustment

For temperature adjustment, see the enclosed product sheet.

### Note:

Ambient air temperature, the frequency of door opening and the position of the appliance can affect the freezer internal temperature.

Take these factors into consideration when setting the thermostat knobs.

## "6th Sense" function

The 6th Sense function, if present, is automatically activated in the following cases:

### • Door opening

The function activates when door opening causes the internal temperature to increase to a level that fails to guarantee safe storage of food; it remains active until optimal storage conditions have been restored.

### • Placing fresh food in the freezer

The function activates when fresh food is placed in the freezer and remains active until optimal freezing conditions are reached so as to ensure the best freezing quality with the lowest power consumption.

**Note:** Besides the quantity of food loaded into the freezer, ambient temperature and the quantity of food already inside the freezer affect the duration of the 6th Sense function. Therefore significant duration variations are quite normal.

## Freezing

**The amount of fresh food (in kg) that can be frozen in 24 hours is indicated on the appliance data plate.**

For optimum appliance performance, press the fast freeze button (until the yellow LED lights up) 24 hours before placing fresh food in the freezer.

After placing fresh food in the freezer, 24 hours on fast freeze function is generally sufficient; After 24 hours, deactivate the fast freeze function

### Attention:

In order to save energy, when freezing small amounts of food, the fast freeze function can be deactivated after a few hours.

If the 6th Sense function is present, appliance operation is controlled automatically and no operation is required (see chapter "6th Sense" Function)



### Tips for freezing and storing fresh food.

- Before freezing, wrap and seal fresh food in: aluminium foil, cling film, air and water-tight plastic bags, polythene containers with lids or freezer containers suitable for freezing fresh food.
- Food must be fresh, mature and of prime quality in order to obtain high quality frozen food.
- Fresh vegetables and fruit should preferably be frozen as soon as they are picked to maintain the full original nutritional value, consistency, colour and flavour.

Some meat, especially game, should be hung before it is frozen.

### Note:

- Always leave hot food to cool before placing in the freezer.
- Eat fully or partially defrosted foods immediately. Do not refreeze unless the food is cooked after it has thawed. Once cooked, the thawed food can be refrozen.

### Freezing and storing fresh food

- Place foods to be frozen in the baskets.

### Important:

The table alongside shows the recommended maximum storage time for frozen fresh foods.

### Classification of frozen foods

Put the frozen products into the freezer and classify them.








The storage date should be indicated on the packs, to allow use within expiry dates.

### Advice for storing frozen food

When purchasing frozen food products:

- Ensure that the packaging is not damaged (frozen food in damaged packaging may have deteriorated). If the package is swollen or has damp patches, it may not have been stored under optimal conditions and defrosting may have already begun.
- When shopping, leave frozen food purchases until last and transport the products in a thermally insulated cool bag.
- Once at home, place the frozen foods immediately in the freezer.
- If food has defrosted even partially, do not re-freeze it. Consume within 24 hours.
- Avoid, or reduce temperature variations to the minimum. Respect the best-before date on the package.
- Always observe the storage information on the package.



MONTHS	FOOD		
1-3			
4-7			
8-12			



### Removing the baskets

- Pull the baskets out fully, then lift them up slightly in order to remove.

Drawers (except the bottom drawer), runners and the white grid (if provided) may be removed in order to obtain increased storage space (**Fig.1**)

Ensure that the load does not exceed the limit (if present) indicated on the side walls of the appliance.

### Compartment

Use this compartment only for making ice cubes and storing small quantities of food.

**Always observe the storage times given on frozen food packaging.**

### Making ice cubes

- Fill the ice cube tray 2/3 full and place it in the special freezer compartment.
- Do not use sharp or pointed instruments to detach the tray if it is stuck to the bottom of the freezer.
- Bend the ice tray slightly to remove the cubes.

### Note:

The freezer door will not re-open easily immediately after closing (except for models featuring a special valve).

Wait a few minutes before opening again in order to allow for compensation of the vacuum created.

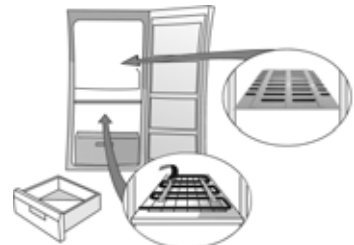


Fig. 1



Fig. 2

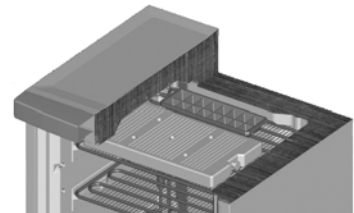


Fig. 3

# HOW TO DEFROST AND CLEAN THE FREEZER

Before any cleaning or maintenance operation, unplug the appliance from the mains or disconnect the electrical power supply.

For electronic models, first press the on/off button and then unplug the the appliance.

Defrost the freezer once or twice a year, or when the formation of ice on the refrigeration grilles is excessive. It is perfectly normal for ice to form on the grilles. The amount of ice which forms and the rate at which it accumulates will depends on room temperature and humidity, and on the frequency with which the door is opened.

If possible, defrost the freezer when it is nearly empty.

- Remove the food from the freezer, wrap in newspaper and group together in a cool place or in a portable cooler.
- Leave the freezer door open to allow the frost to melt.
- Clean the interior of the freezer with a sponge and warm water and/or neutral detergent. Do not use abrasive substances.
- Rinse the interior and dry thoroughly.
- Put the food back into the freezer.
- Close the freezer door.
- Plug in the appliance once again.
- Switch on the freezer.

**Note:** for electronic models, first insert the power plug into the mains socket and then press the on/off button to switch on the appliance.

For the correct defrosting procedure, refer to the PRODUCT DESCRIPTION SHEET.

## CARE AND MAINTENANCE

Before any cleaning or maintenance operation, unplug the appliance from the mains or disconnect the electrical power supply.

For electronic models, first press the on/off button and then unplug the the appliance.

Periodically clean the condenser at the rear of the appliance with a vacuum cleaner or brush.

Periodically clean the inside of the compartment with a sponge dampened in warm water and/or neutral detergent. Rinse and dry with a soft cloth. Do not use abrasive products

### Prolonged disuse

- Empty the freezer.
- Disconnect the freezer from the mains power supply.
- Defrost and clean.

Leave the door open to prevent formation of unpleasant odours and to eliminate any dampness

**Note:** for electronic models, first insert the power plug into the mains socket and then press the on/off button to switch on the appliance.



# TROUBLESHOOTING GUIDE

## 1. The appliance is not working.

- Is there a power failure?
- Is the main power switch on?
- Has the fuse blown?
- Is the thermostat setting correct?
- Was the appliance switched on correctly?

## 2. Excessive frost build-up.

- Has the defrost water drain been positioned correctly?
- Is the door shut properly?

## 3. The yellow, red and green leds do not light up. Perform the checks for point 1, and then:

- Contact After-sales Service.

### Notes:

- The front edge of the appliance may be hot. This prevents the formation of condensation and is not a defect.
- Gurgling and hissing noises due to expansion in the refrigerant circuit are normal.

# AFTER-SALES SERVICE

### Before contacting the After-sales Service:

1. See if you can solve the problem yourself with the help of the Troubleshooting guide.
2. Switch the appliance on again to see if the problem has been solved. If it has not, disconnect the appliance from the power supply and wait for about an hour before switching on again.
3. If the problem persists after this course of action, contact After-sales Service.

### Specify:

- the nature of the fault,
- the model,
- the Service number (the number after the word SERVICE on the rating plate on the inside of the appliance),
- your full address,
- your telephone number and area code.

**SERVICE** 0000 000 00000



### Note:

The direction of door opening can be changed. If this operation is performed by After-sales Service it is not covered by the warranty.

The door cannot be reversed on models with front handle.



# INSTALLATION

- Install the appliance away from heat sources. Installation in a hot place, near heat sources (radiators, cookers) or direct exposure to the sun will increase energy consumption and should be avoided.
- If this is not possible, respect these minimum distances:
  - 30 cm from coal or oil stoves;
  - 3 cm from electric and/or gas cookers.
- For optimum operation, ensure:
  - a space of at least 5 cm above the appliance;
  - a distance of at least 4 cm from the rear wall;
  - place other cabinets at a suitable distance from the appliance to allow at least some air circulation
- Install the appliance level (adjust the front feet if necessary) in a dry and well-aired place.
- Clean the inside.
- Insert the accessories supplied.

## Electrical connection

- **Electrical connections must comply with local regulations.**
- Voltage and power input are specified on the rating plate inside the appliance.
- **Regulations require the appliance to be earthed. The Manufacturer declines any liability for injury or damage to property resulting from failure to observe the above rules.**
- If the plug and socket are not of the same type, have the socket replaced by a qualified electrician.
- Do not use extension leads or adapters.

## Electrical disconnection

It must be possible to electrically disconnect the appliance by unplugging it or by means of a double-pole switch installed ahead of the socket.

# ELECTRICAL CONNECTION

## 1) For Great Britain only

**Warning - this appliance must be earthed**

### Fuse replacement

If the mains lead of this appliance is fitted with a BS 1363A 13amp fused plug, to change a fuse in this type of plug use an A.S.T.A. approved fuse to BS 1362 type and proceed as follows:

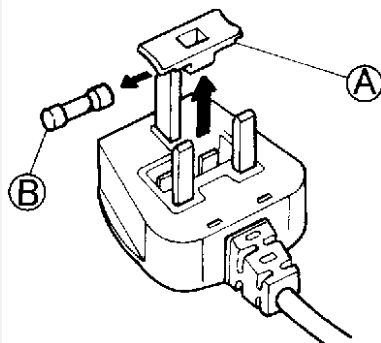
1. Remove the fuse cover (A) and fuse (B).
2. Fit replacement 13A fuse into fuse cover.
3. Refit both into plug.

### Important:

The fuse cover must be refitted when changing a fuse and if the fuse cover is lost the plug must not be used until a correct replacement is fitted.

Correct replacement are identified by the colour insert or the colour embossed in words on the base of the plug.

Replacement fuse covers are available from your local electrical store.



## 2) For the Republic of Ireland only

The information given in respect of Great Britain will frequently apply, but a third type of plug and socket is also used, the 2-pin, side earth type.

## 3) Socket outlet / plug (valid for both countries)

If the fitted plug is not suitable for your socket outlet, please contact Whirlpool Service for further instruction. Please do not attempt to change plug yourself. This procedure needs to be carried out by a qualified Whirlpool technician in compliance with the manufactures instructions and current standard safety regulations.

5019 300 02638

